



AUTOMOTIVE CORPORATION

---

---

## STEERABLE DRIVE AXLE SPECIFICATIONS FABCO MODEL SDA-1600

The Fabco Model SDA-1600 Steerable Drive Axle is an open joint design, intended for highway use with off-road and rough terrain excursion capabilities.

<b>Maximum Capacity</b>	16,000 Pounds Load Rating
<b>Brakes</b>	
Type	Drum, S-cam
Size	16.5 Diameter x 6 Inch
Chamber	20 Square Inch
Certification	FMVSS 121
Slack Adjusters	Automatic
<b>Housing</b>	Fabricated Steel, Cast Banjo, Center Bowl
<b>Camber</b>	1/2 Degrees Positive
<b>Wheels</b>	
Mounting	10-Studs on 11.25 Inch Bolt Circle
Minimum Wheel Size	20 Inch
<b>Differential Carrier</b>	Hypoid
Ring Gear Diameter	14.5 Inch
Pinion Spline	1.75 Diameter, 34 Spline Involute
Single Reduction Ratios	3.55, 3.70, 3.90, 4.11, 4.33, 4.63, 4.88 5.29, 5.38, 5.57, 5.83, 6.17, 6.50, 7.17
<b>Universal Joint</b>	Single Cardan
<b>Kingpins</b>	
Type	Spherical
Inclination	5 Degrees
<b>Track</b>	91.1 Inches over wheel Mounting Faces
<b>Axle Shafts</b>	
Spline	1.85 Inch Diameter, 34 Spline Involute
Body	1.69 Inch Diameter
<b>Turn Angle</b>	35 Degrees
<b>Lubrication</b>	
Type	SAE 90, 140, 80W-140, Synthetic Acceptable
<b>Weight – Dry</b>	1,550 Lb.

---

**OPTIONS:** 10-Studs on 285.75mm B.C., Dual Steering Arms, Spring Seat Width, Spring Seat Width, Spring Seat Centers, Caster Angle, Spring Seat Centers and Caster Angle. Central Tire Inflation, Track over wheel mounting faces

---

For parts or service call us  
Pro Gear & Transmission, Inc.



**1 (877) 776-4600**

**(407) 872-1901**

**[parts@eprogear.com](mailto:parts@eprogear.com)**

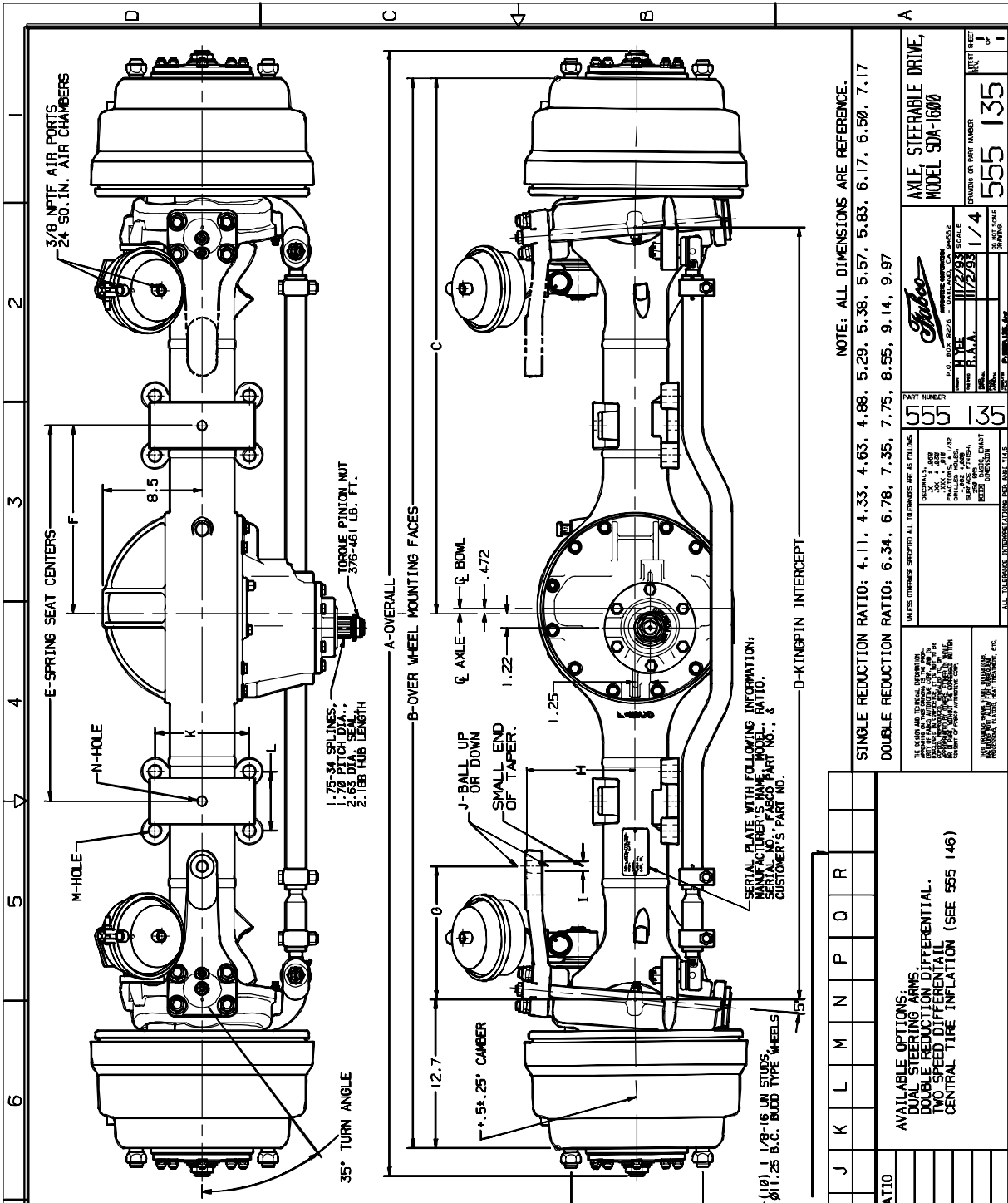
**906 W. Gore St.**

**Orlando, FL 32805**



**REFERENCE INFORMATION:**

ACKERMANN TO SUIT WHEELBASE  
 EATON 19050S DIFFERENTIAL  
 ESTIMATED 12 QT. LUBE CAPACITY  
 16.5 X 6 'S' CAM AIR BRAKES



NOTE: ALL DIMENSIONS ARE REFERENCE.  
 SINGLE REDUCTION RATIO: 4.11, 4.33, 4.63, 4.88, 5.29, 5.38, 5.57, 5.83, 6.17, 6.50, 7.17  
 DOUBLE REDUCTION RATIO: 6.34, 6.78, 7.35, 7.75, 8.55, 9.14, 9.97

AXLE	STEERING	DRIVE
STEERING	STEERING	STEERING
STEERING	STEERING	STEERING
STEERING	STEERING	STEERING
STEERING	STEERING	STEERING
STEERING	STEERING	STEERING
STEERING	STEERING	STEERING
STEERING	STEERING	STEERING
STEERING	STEERING	STEERING

STANDARD.	CUSTOMER TO SPECIFY.															
A	B	C	D	E	F	G	H	I	J	K	L	M	N	P	Q	R
96.0	91.1	145.6	65.8													
CUSTOMER PART NO.	FABCO PART NO.	RATIO														

AVAILABLE OPTIONS:  
 DUAL STEERING ARMS  
 DOUBLE REDUCTION DIFFERENTIAL  
 NO SPEED DIFFERENTIAL  
 CENTRAL LINE INFLATION (SEE 555 148)

MANUFACTURER'S NAME	555
MODEL	555
SERIAL NO.	135
FABCO PART NO.	
CUSTOMER'S PART NO.	

AXLE STEERING DRIVE	555
MODEL	555
MODEL	555
MODEL	555
MODEL	555
MODEL	555
MODEL	555
MODEL	555
MODEL	555
MODEL	555

**555 135**

AXLE, STEERING DRIVE, MODEL 555-16000

DRIVER OR PART NUMBER: 555 135

DATE: 11/22/83

SCALE: 1/4

REV. 1

REV. 2

REV. 3

REV. 4

REV. 5

REV. 6

REV. 7

REV. 8

REV. 9

REV. 10

REV. 11

REV. 12

REV. 13

REV. 14

REV. 15

REV. 16

REV. 17

REV. 18

REV. 19

REV. 20

REV. 21

REV. 22

REV. 23

REV. 24

REV. 25

REV. 26

REV. 27

REV. 28

REV. 29

REV. 30

REV. 31

REV. 32

REV. 33

REV. 34

REV. 35

REV. 36

REV. 37

REV. 38

REV. 39

REV. 40

REV. 41

REV. 42

REV. 43

REV. 44

REV. 45

REV. 46

REV. 47

REV. 48

REV. 49

REV. 50

REV. 51

REV. 52

REV. 53

REV. 54

REV. 55

REV. 56

REV. 57

REV. 58

REV. 59

REV. 60

REV. 61

REV. 62

REV. 63

REV. 64

REV. 65

REV. 66

REV. 67

REV. 68

REV. 69

REV. 70

REV. 71

REV. 72

REV. 73

REV. 74

REV. 75

REV. 76

REV. 77

REV. 78

REV. 79

REV. 80

REV. 81

REV. 82

REV. 83

REV. 84

REV. 85

REV. 86

REV. 87

REV. 88

REV. 89

REV. 90

REV. 91

REV. 92

REV. 93

REV. 94

REV. 95

REV. 96

REV. 97

REV. 98

REV. 99

REV. 100