



AUTOMOTIVE CORPORATION

STEERABLE DRIVE AXLE SPECIFICATIONS FABCO MODEL SDA-2300

The Fabco Model SDA-2300 Steerable Drive Axle is an exposed Cardan joint design developed for use on-highway with rough terrain capability.

Maximum Capacity	23,000 Pounds Load Rating
Brakes	
Type	Drum, S-cam
Size	16.5 Diameter x 7 Inch
Chamber	30 Square Inch
Certification	FMVSS 121
Slack Adjusters	Automatic
Housing	Fabricated Steel, Cast Banjo, Center Bowl
Camber	1/2° Positive
Wheels	
Mounting	10-Studs on 13.19 Inch Bolt Circle
Minimum Wheel Size	20 Inch
Differential Carrier	
Ring Gear Diameter	Spiral Bevel
Pinion Spline	18 Inch
Single Reduction Ratios	2.100 Diameter, 41 Involute Splines 3.55, 3.70, 3.90, 4.11, 4.33, 4.56, 4.88, 5.29, 5.43, 6.17, 6.50, 6.67
Universal Joint	Single Cardan, 10C
Steering]	Ackerman to Match Wheelbases 160" to 185" or 186" to 219" Dual Steering Arms
Kingpins	
Type	Spherical, Nylatron Races
Inclination	5°
Track	91.75 Inches Across Wheel Mounting Faces
Axle Shafts	
Spline	2.312 Inch Diameter, 36 Spline
Body	2.06 Inch Diameter
Turn Angle	
Type	35°
Lubrication	
Type	SAE 90, 140, 80W-140
Capacity	17 Quarts (Est.)
Weight – Dry	2,100 Lb.

OPTIONS:

 Double Reduction Ratios 5.04, 5.31, 5.60, 5.90, 6.20, 6.64, 7.39, 8.40, 9.08

 And axle tracks

For parts or service call us
Pro Gear & Transmission, Inc.



1 (877) 776-4600

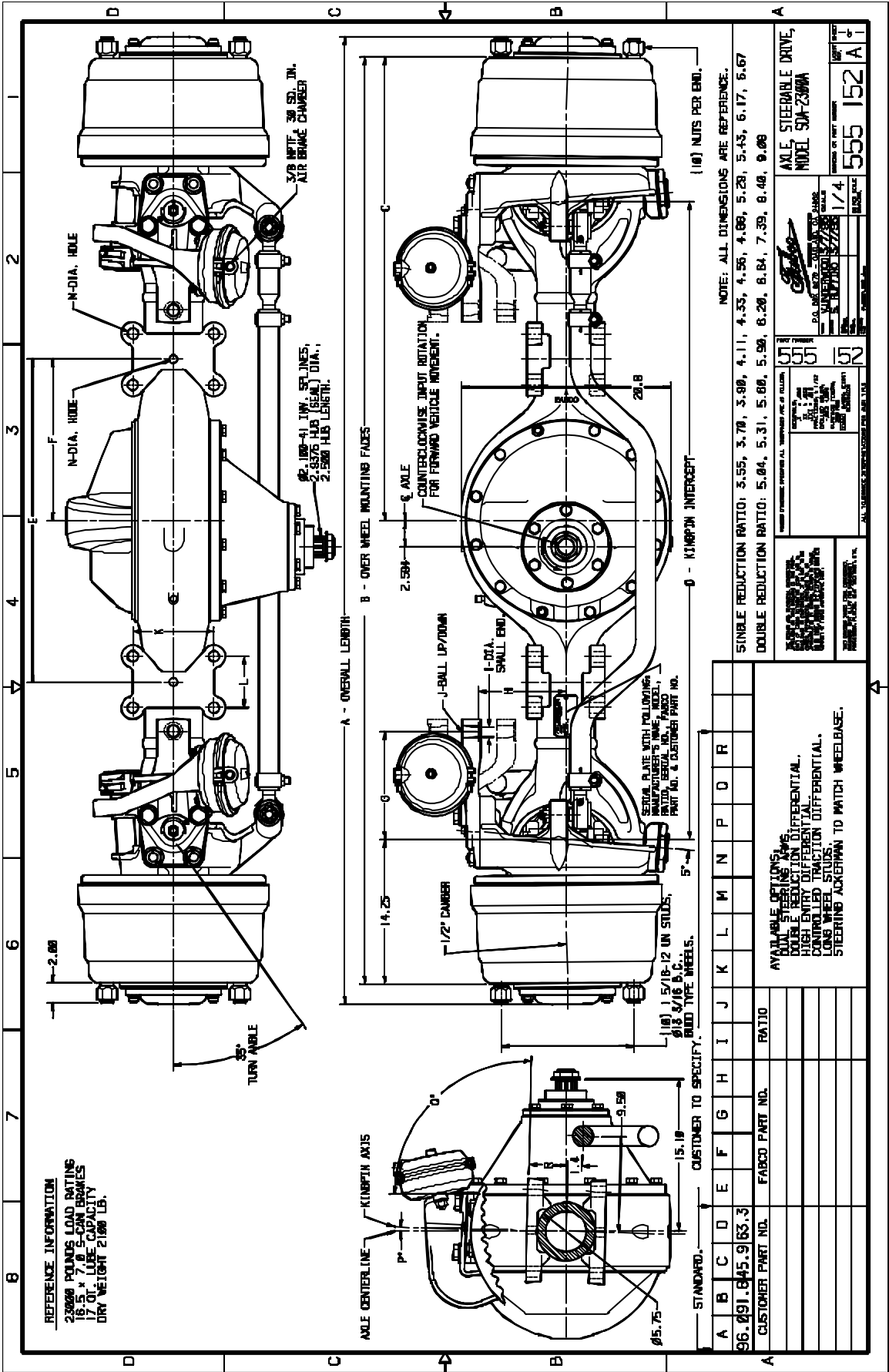
(407) 872-1901

parts@eprogear.com

906 W. Gore St.

Orlando, FL 32805





A	B	C	D	E	F	G	H	I	J	K	L	M	N	P	O	R
96.091.045.9163.3																
CUSTOMER PART NO.	RATIO															
FABRIC PART NO.	AVAILABLE OPTIONS: DUAL STEERING AXLES DOUBLE REDUCTION DIFFERENTIAL HIGH ENTRY DIFFERENTIAL CONTROLLED TRACTION DIFFERENTIAL LONG WHEEL STUDES STEERING ALGORITHM TO MATCH WHEELBASE.															

AXLE STEERABLE DRIVE, MODEL SJA-2300A

MANUFACTURED BY: **AMERICAN AXLE & MANUFACTURING COMPANY, INC.**

DATE OF INVENTION: 1/4

MODEL NO.: 555

QUANTITY: 152

UNIT PRICE: A