



Muncie FR3C Series PTO Parts & Service Manual

Pro Gear presents Muncie FR3C Series PTO Parts & Service Manual to assist in identifying the parts for your Muncie Power Take Off unit.

If you need any assistance identifying the correct Power Take Off unit for your truck and equipment, contact your Muncie replacement part specialists at Pro Gear and Transmission.

Pro Gear stocks every part for your Muncie PTO including: PTO housings, mounts, driveshafts, gears, bearings, gaskets, cable shift cover assembly, post and plate assembly, brackets, stud kits, seal kits, lever control assembly, air shift cover assembly, direct mount pump conversion kits, stud kits including English and metric references, and much more.

Pro Gear Transmission has same day shipping and 1000's of products in stock and ready to ship internationally for your next project.

For parts or service contact the Muncie specialists at Pro Gear & Transmission, Inc.

1 (877) 776-4600
(407) 872-1901
parts@eprogear.com

[Check Inventory](#)

[Email Us](#)

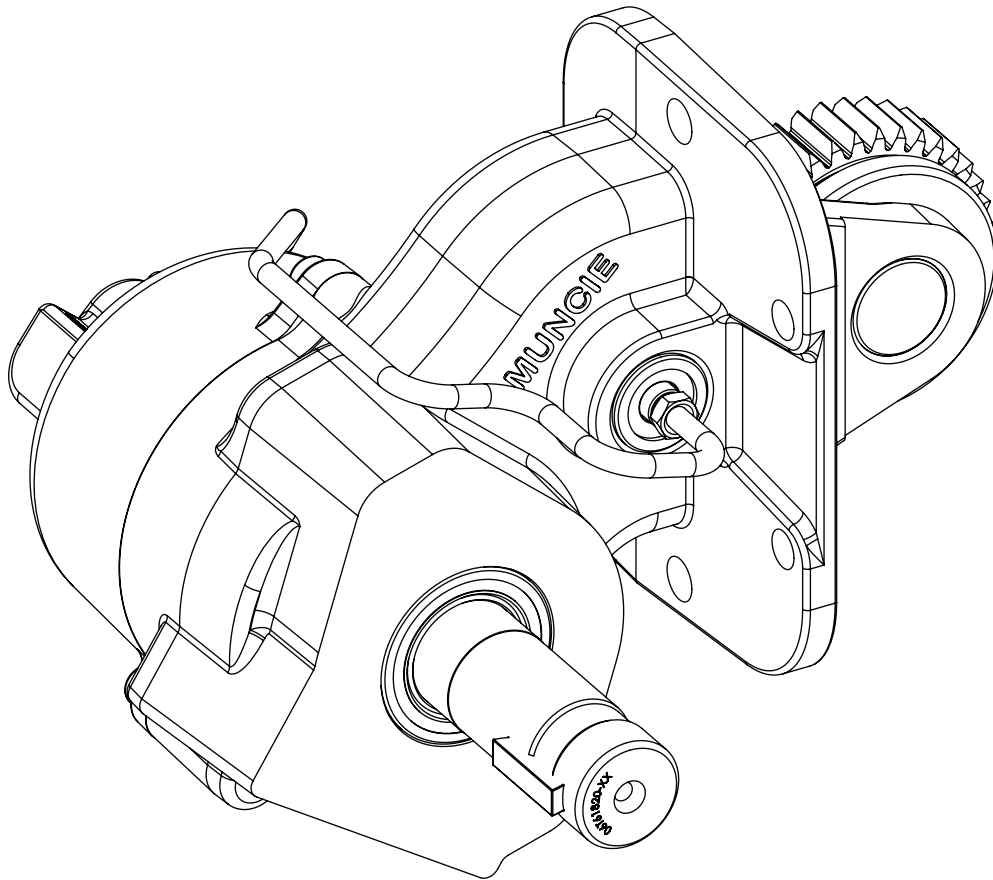
[Call Us](#)



Muncie®
Power
Products

FR3C PTO

PARTS LIST AND SERVICE MANUAL



Muncie Power Products, Inc.

Pro Gear and Transmission, Inc. | 900 West Gore St., Orlando, FL 32805

+1 (877) 776-4600 | +1 (407) 872-1901

www.progearandtransmission.com | www.pgtruckparts.com | parts@eprogear.com

MODEL NUMBER CONSTRUCTION

FR3C-F12 09-F 3 B X

Model:

FR3C – Ford 6-Bolt

Transmission Gear:

F12 – Ford 12.18P

Ratio:

09 – 0.90:1

Shift Type:

6 – Elec/Hyd (F-650/F-750 Diesel)

F – Elec/Hyd (F-650/F-750 Gas)

Special Features:

X = None

Output Type:

B – 1¼" Round Key

Assembly Arrangement:

3

Other Literature

IN10-01 – Installation and Operator's Manual

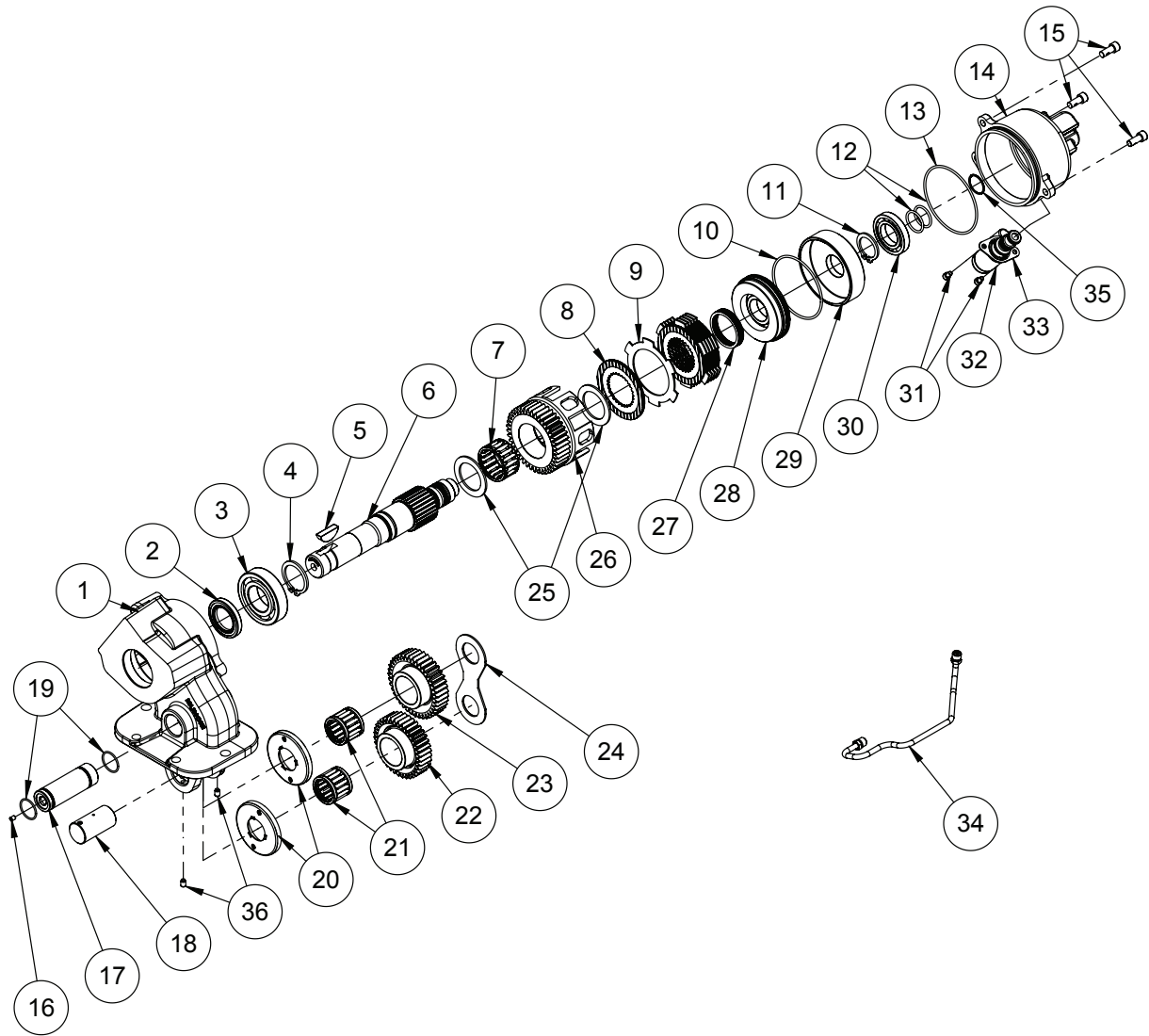
MP16-01 – FR3C Series spec brochure

Pro Gear and Transmission, Inc. | 906 West Gore St, Orlando, FL 32805

+1 (877) 776-4600 | +1 (407) 872-1901

www.progearandtransmission.com | www.pgtruckparts.com | parts@eprogear.com

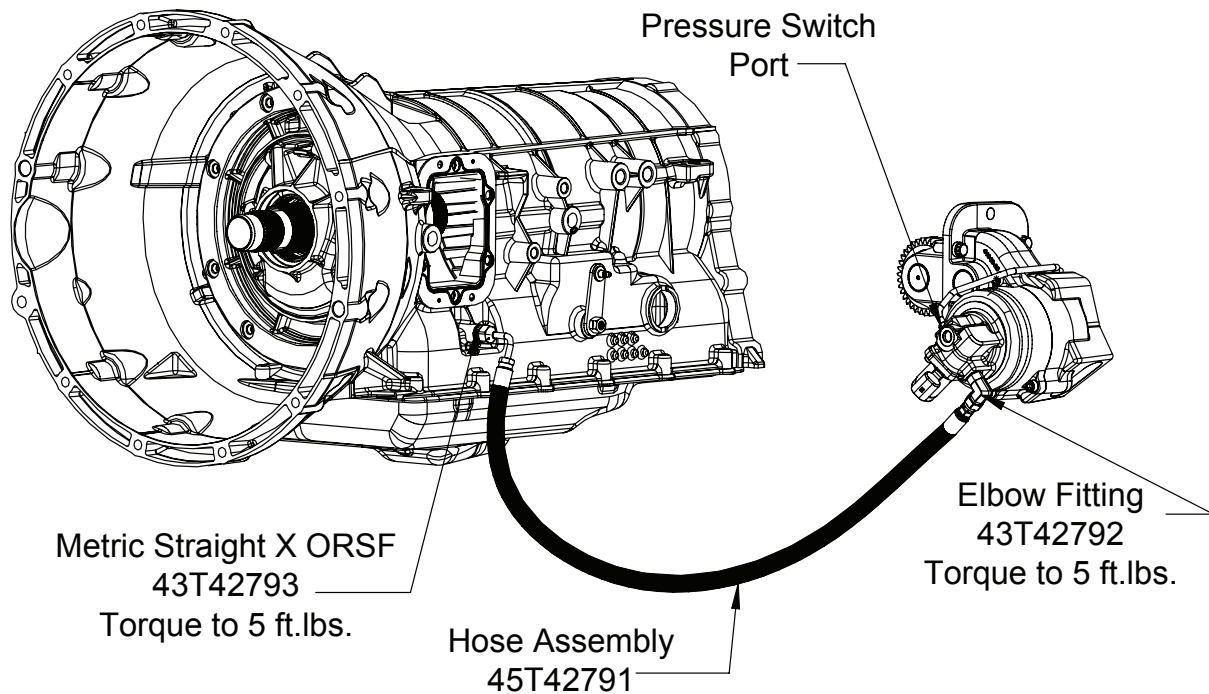
EXPLODED VIEW



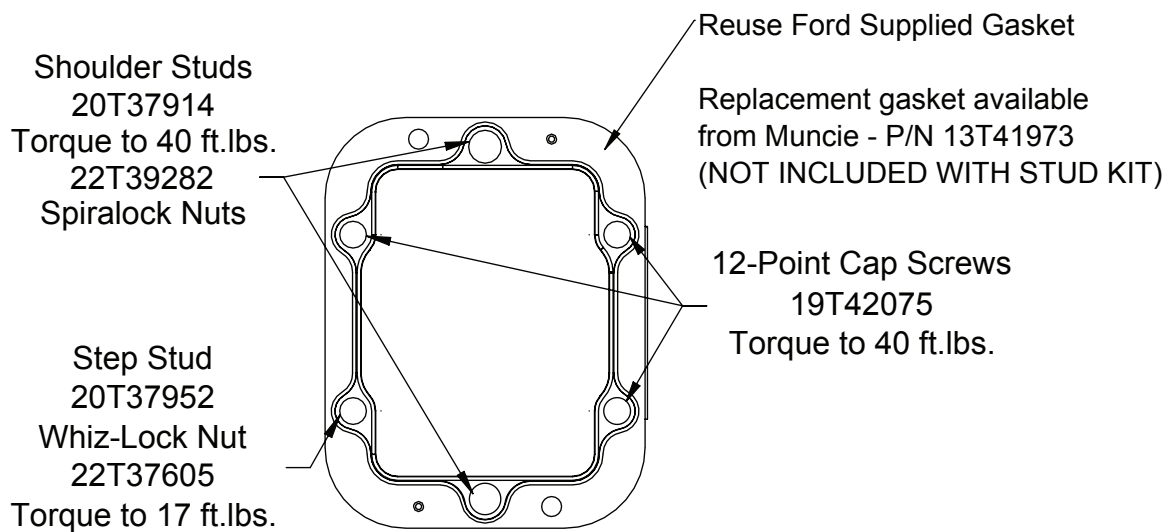
| ITEM | QTY | PART NO. | DESCRIPTION | ITEM | QTY | PART NO. | DESCRIPTION |
|------|-----|----------|----------------|------|-----|----------|---------------------------|
| 1 | 1 | 01T61819 | Housing | 19 | 2 | 12T35577 | O-Ring |
| 2 | 1 | 11T61821 | Shaft Seal | 20 | 2 | 49TA5304 | Drag Element |
| 3 | 1 | 10T21017 | Output Bearing | 21 | 2 | 10T39145 | Needle Bearing |
| 4 | 1 | 24T35480 | Snap Ring | 22 | 1 | 03T61917 | Input Gear |
| 5 | 1 | 26T01627 | Woodruff Key | 23 | 1 | 04T61918 | Idler Gear |
| 6 | 1 | 06T61820 | Output Shaft | 24 | 1 | 10T42016 | Thrust Plate |
| 7 | 1 | 49T37008 | Needle Bearing | 25 | 2 | 21T39080 | Spacer |
| 8 | 7 | 49T61803 | Friction Disc | 26 | 1 | 02TA6098 | Output Gear |
| 9 | 6 | 49T36258 | Spacer Disc | 27 | 1 | 27T61827 | Spring |
| 10 | 1 | 12T36540 | O-Ring | 28 | 1 | 49T61822 | Piston |
| 11 | 1 | 24T39182 | Snap Ring | 29 | 1 | 49T39022 | Piston Cup |
| 12 | 2 | 12T39023 | O-Ring | 30 | 1 | 10T39072 | Bearing |
| 13 | 1 | 12T36863 | O-Ring | 31 | 2 | 19T62950 | Cap Screw |
| 14 | 1 | 15T62484 | Cover | 32 | 1 | 35T43600 | Solenoid Valve |
| 15 | 3 | 19T35237 | Cap Screw | 33 | 1 | 49T62436 | Solenoid Retaining Ring |
| 16 | 1 | 43T42757 | Orifice | 34 | 1 | 43T42664 | Lubrication Tube Assembly |
| 17 | 1 | 08T42756 | Idler Shaft | 35 | 1 | 12T36280 | O-Ring |
| 18 | 1 | 07T42755 | Input Shaft | 36 | 2 | 19T34789 | Set Screw |

FR3C INSTALLATION KITS

FR3C Electric/Hydraulic Shift System – Activation Kit Common Componentry



Stud Kit (20TK5215) Installation Details



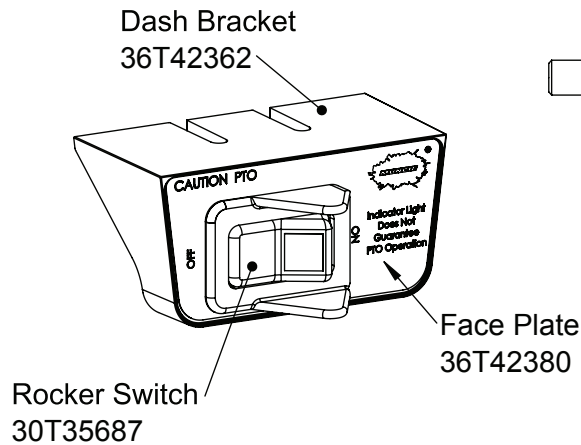
**SEE IN 10-01 FOR
MOUNTING DETAILS**

FR3C ACTIVATION KITS

“X” Special Feature – Stationary Or Mobile

48TK5684 – Elec/Hyd Shift/System “6X” DIESEL; Wire Harness 34T43730

48TK5680 – Elect/Hyd Shift System “FX” GAS; Wire Harness 34T43735



Pressure Switch with -2 SAE Fitting
30T60223

Diesel Only - Gas requires 49TK5533

Remote Mount Pressure Switch Kit

See Next Page for Details

Not Shown -

28T35442 - Cable Ties (6 PCS)

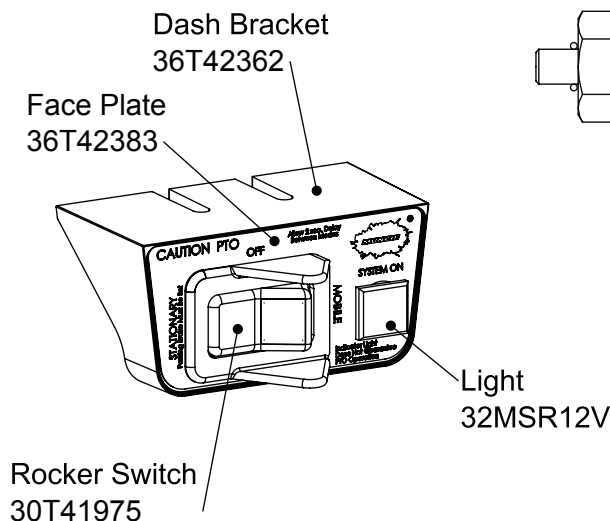
36MK1007 - Dash Bracket Bolt Kit

37T35674 - Grommet

“B” Special Feature – Stationary And Mobile

48TK5682 – Elec/Hyd Shift/System “6B” DIESEL; Wire Harness 34T43740

48TK5676 – Elect/Hyd Shift System “FB” GAS; Wire Harness 34T43745



Pressure Switch with -2 SAE Fitting
30T60223

Diesel Only - Gas requires 43TK5527

Remote Mount Pressure Switch Kit

See Next Page for Details

Not Shown -

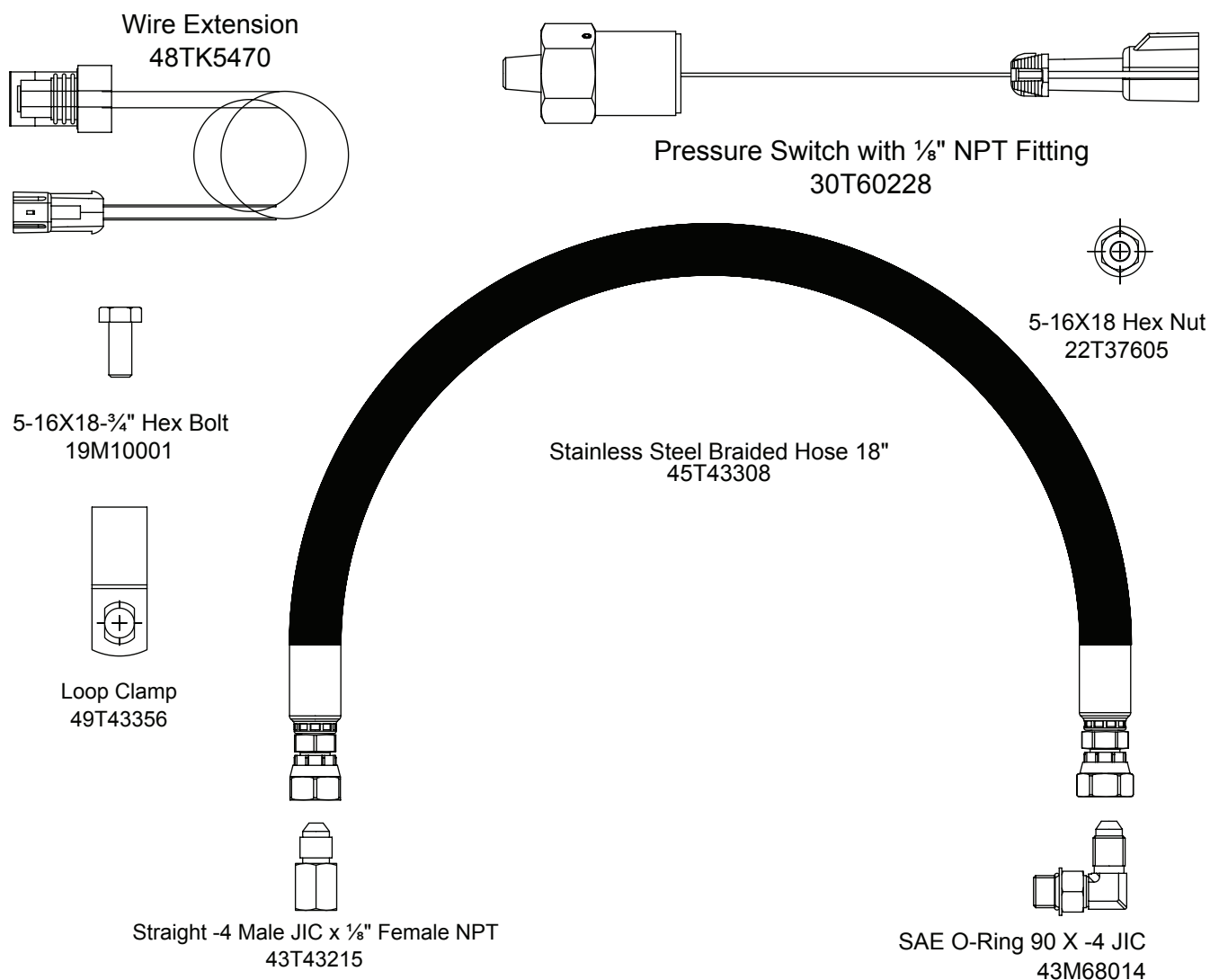
28T35442 - Cable Ties (6 PCS)

36MK1007 - Dash Bracket Bolt Kit

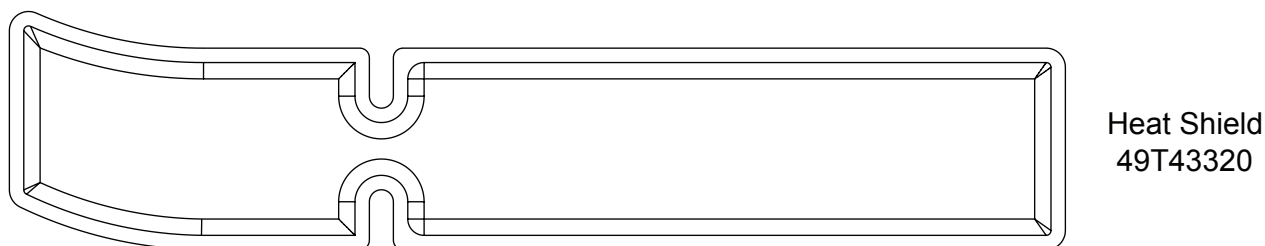
37T35674 - Grommet

36T41941 - Visor Decal

48TK5527 – Remote Mount Pressure Switch Kit Parts List (Required with FX and FB Shift Options ONLY)



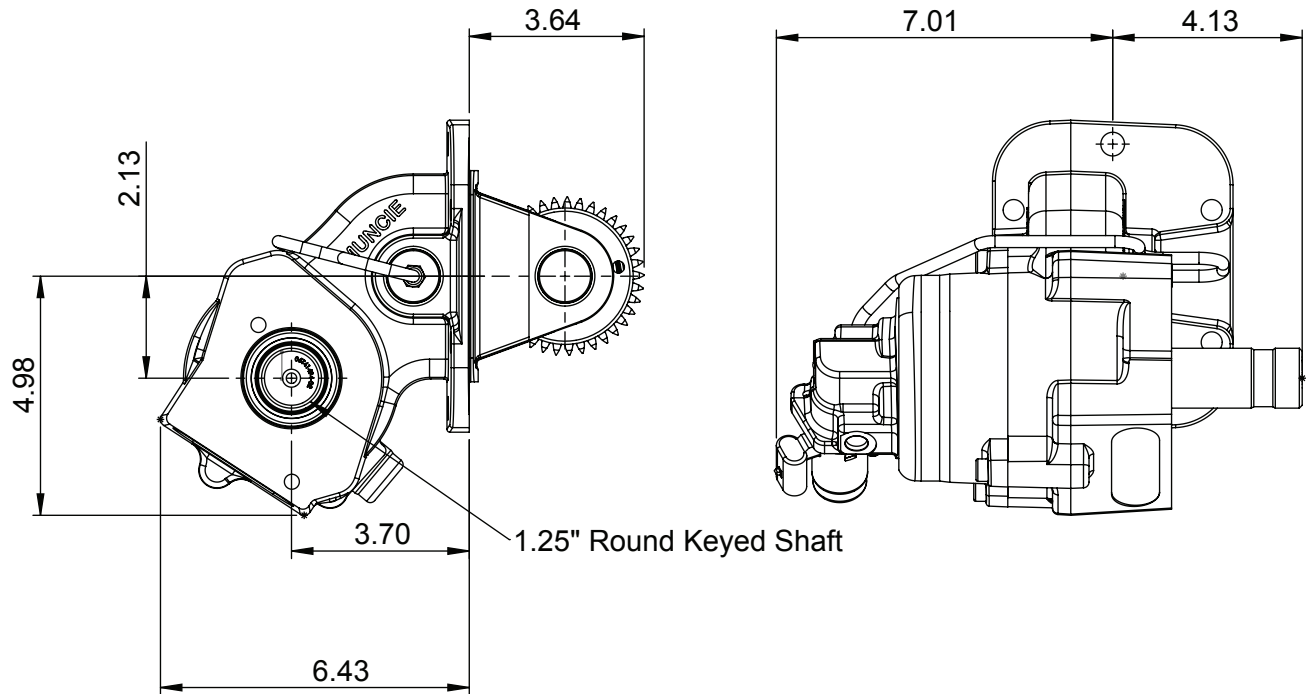
49TK5533 – Heat Shield Kit Parts List (Required with FX and FB Shift Options ONLY)



Includes 48TK5557 fastener kit

DIMENSIONS

FR3C-F1209-*3B*





**Muncie®
Power
Products**

A Member of the Interpump Group

SP16-03 (Rev. 09-20)

201 East Jackson Street • Muncie, Indiana 47305
800-367-7867 • Fax 765-284-6991 • info@munciepower.com • www.munciepower.com

Specifications are subject to change without notice. Visit www.munciepower.com
for warranties and literature. All rights reserved. © Muncie Power Products, Inc. (2017)

Pro Gear and Transmission, Inc. | 906 West Gore St, Orlando, FL 32805
+1 (877) 776-4600 | +1 (407) 872-1901
www.progearandtransmission.com | www.pgtruckparts.com | parts@eprogear.com