

Muncie FR66 Series PTO Parts & Service Manual

Pro Gear presents Muncie FR66 Series PTO Parts & Service Manual to assist in identifying the parts for your Muncie Power Take Off unit.

If you need any assistance identifying the correct Power Take Off unit for your truck and equipment, contact your Muncie replacement part specialists at Pro Gear and Transmission.

Pro Gear stocks every part for your Muncie PTO including: PTO housings, mounts, driveshafts, gears, bearings, gaskets, cable shift cover assembly, post and plate assembly, brackets, stud kits, seal kits, lever control assembly, air shift cover assembly, direct mount pump conversion kits, stud kits including English and metric references, and much more.

Pro Gear Transmission has same day shipping and 1000's of products in stock and ready to ship internationally for your next project.

For parts or service contact the Muncie specialists at Pro Gear & Transmission, Inc.

1 (877) 776-4600
(407) 872-1901
parts@eprogear.com

[Check Inventory](#)

[Email Us](#)

[Call Us](#)

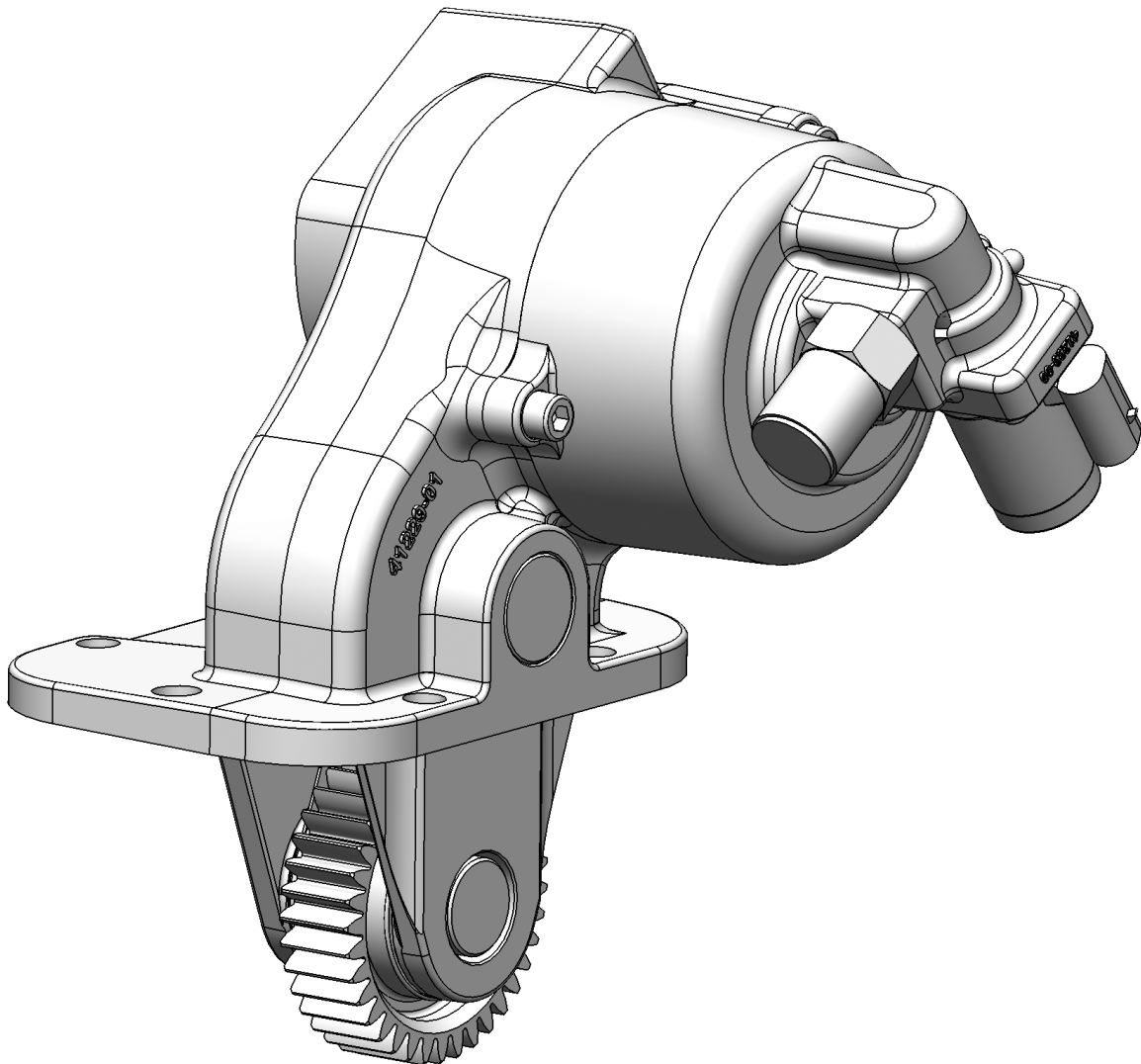


Muncie®
Power
Products

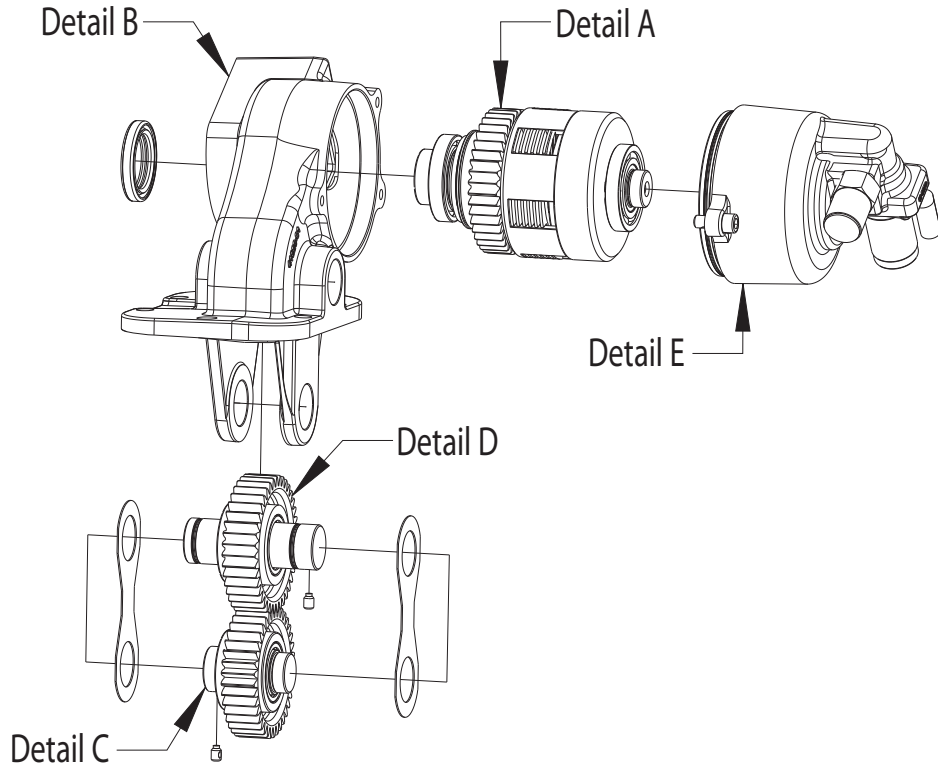
FR66 SERIES POWER TAKE-OFF

PARTS LIST AND SERVICE MANUAL

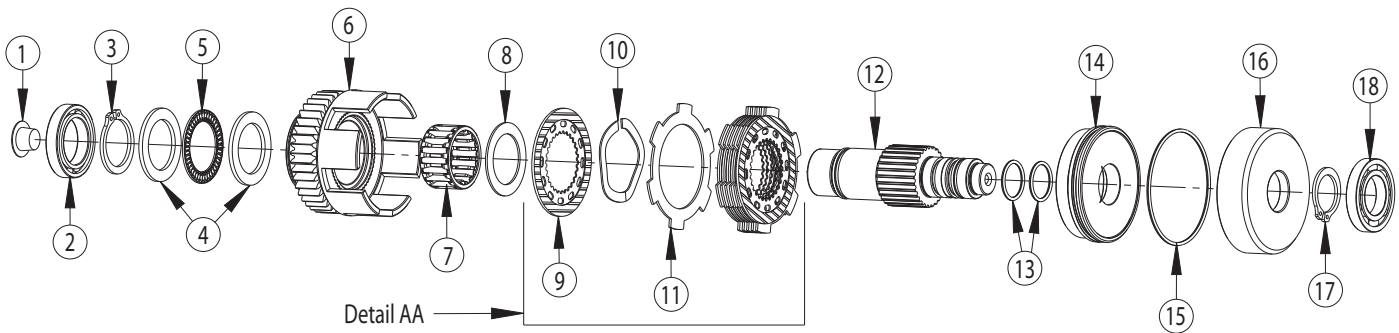
NOTE: FOR UNITS BUILT PRIOR TO JUNE 2013



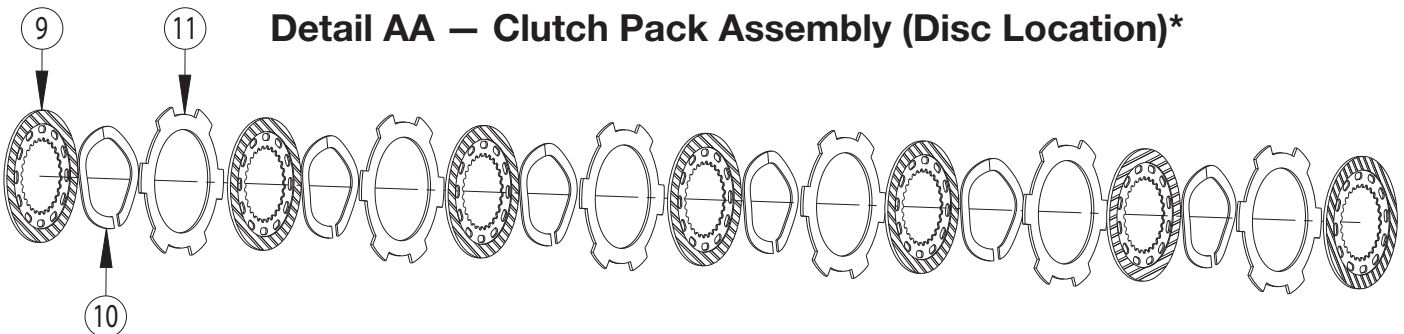
FR66 EXPLODED VIEWS



Detail A — Output Shaft Assembly



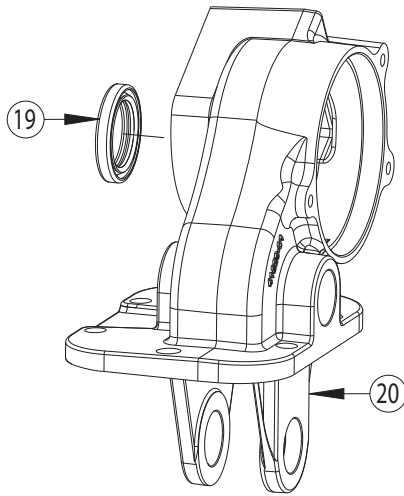
Detail AA — Clutch Pack Assembly (Disc Location)*



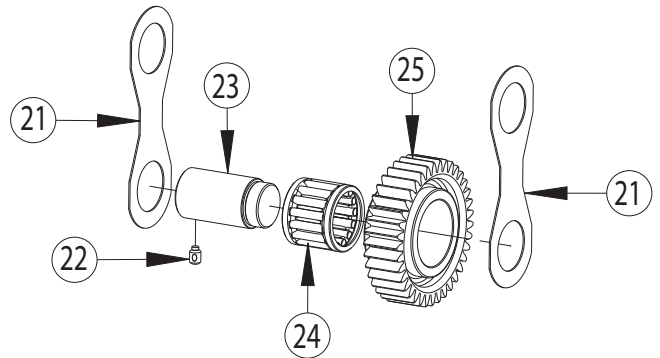
* The clutch pack assembly contains a friction disc followed by a spacer disc and a spring. The assembly should begin and end with a friction disc.

FR66 EXPLODED VIEWS

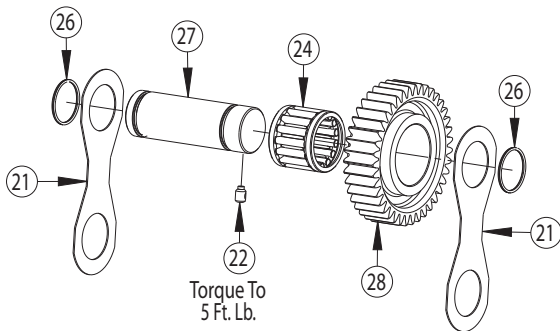
Detail B — PTO Housing



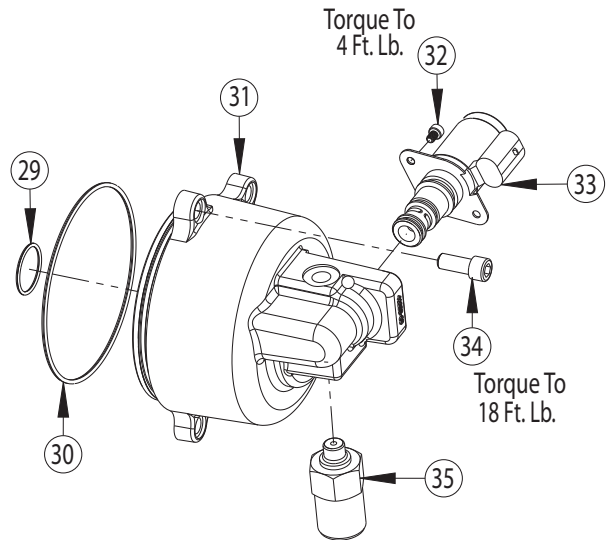
Detail C — Input Shaft Assembly



Detail D — Idler Shaft Assembly



Detail E — End Cover Assembly



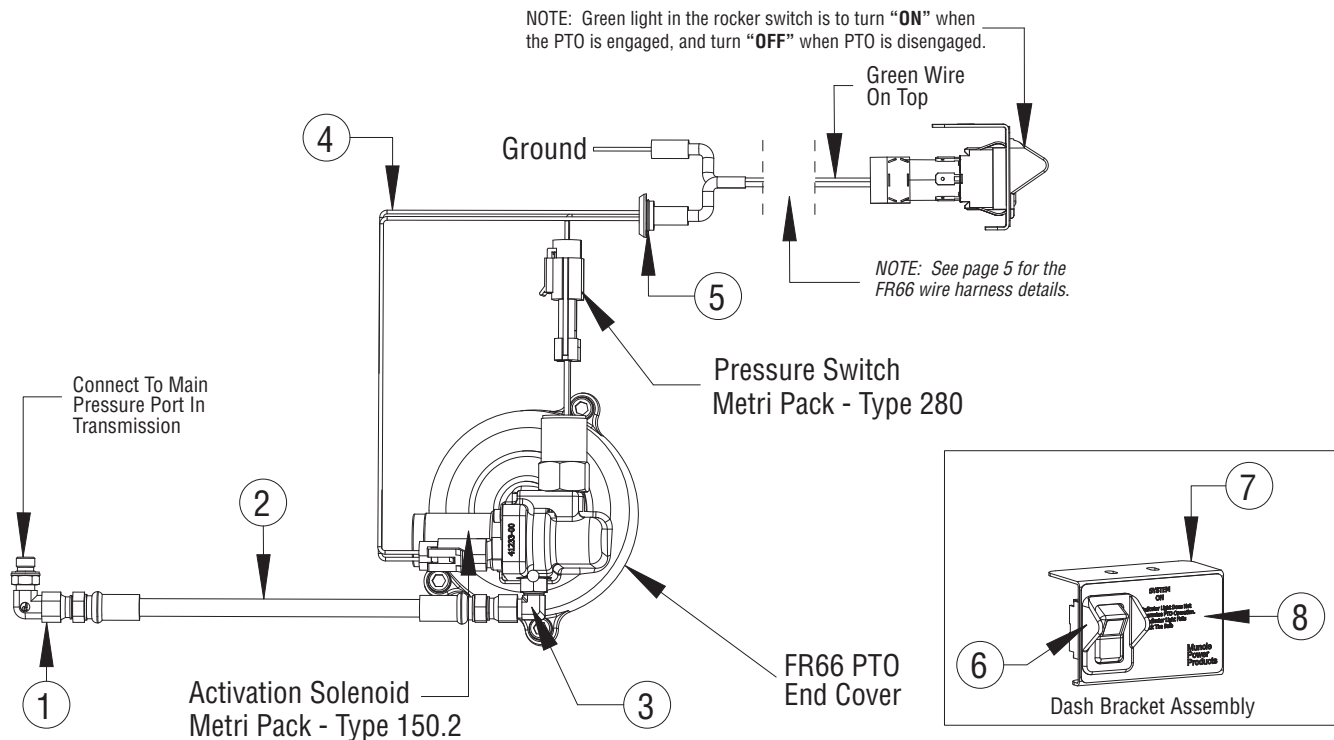
PARTS LIST AND DESCRIPTION

ITEM	QTY	PART NO.	DESCRIPTION
01	1	25T37387	Cap Plug
02	1	10T39147	Bearing
03	1	24T35480	Snap Ring
04	2	21T29017	Washer
05	1	10T37009	Thrust Bearing
06	1	02T41804	Output Gear
07	1	10T37008	Needle Bearing
08	1	21T37085	Washer
09	7	49T36259	Friction Disc
10	6	27T36286	Spring
11	6	49T36258	Spacer Disc
12	1	06T41493	Output Shaft "N"
	1	06T41494	Output Shaft "B"
13	2	12T39023	O-Ring
14	1	49T38881	Piston
15	1	12T36540	O-Ring
16	1	49T39022	Piston Cup
17	1	24T39182	Snap Ring

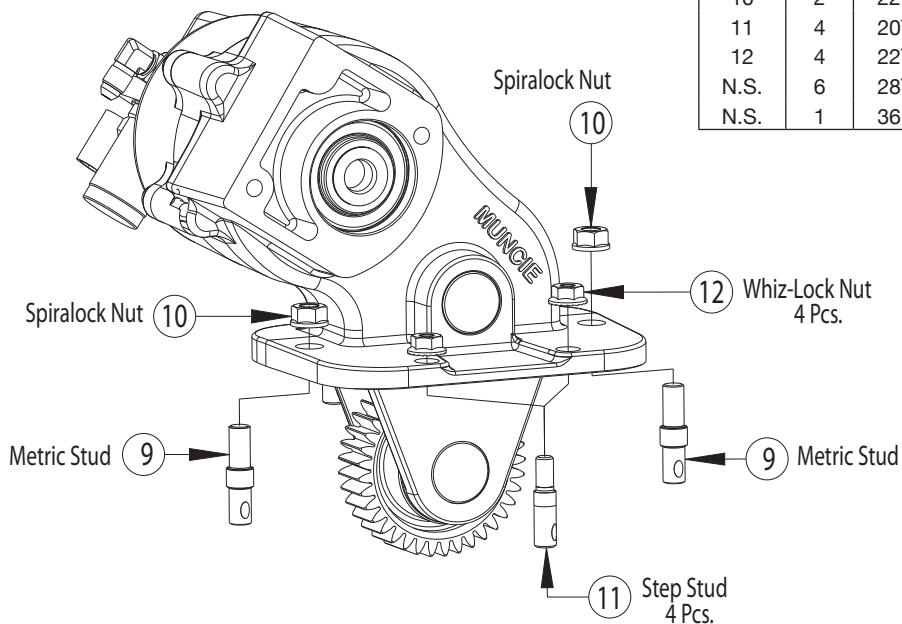
ITEM	QTY	PART NO.	DESCRIPTION
18	1	10T39072	Bearing
19	1	11T37790	Seal
20	1	01T41230	PTO Housing
21	2	10T41590	Thrust Plate
22	2	19T34789	Setscrew
23	1	07T41238	Input Idler Shaft
24	2	10T39145	Needle Bearing
25	1	03T41802	Input Idler Gear
26	2	12T35577	O-Ring
27	1	08T41236	Reverse Idler Shaft
28	1	04T41235	Reverse Idler Gear
29	1	12T36280	O-Ring
30	1	12T36279	O-Ring
31	1	15T41234	End Cover
32	2	19T40859	Capscrew
33	1	35T40860	Directional Control Valve
34	3	19T35237	Capscrew
35	1	30T60223	Switch
N.S.	1	25T41375	Plug
N.S.	1	26T01627	Woodruff Key – "B" Shaft

FR66 INSTALLATION KITS – 43TK5209

FR66 Electric/Hydraulic Shift System – “D”Activation Kit



FR66 Bolt Kit Installation

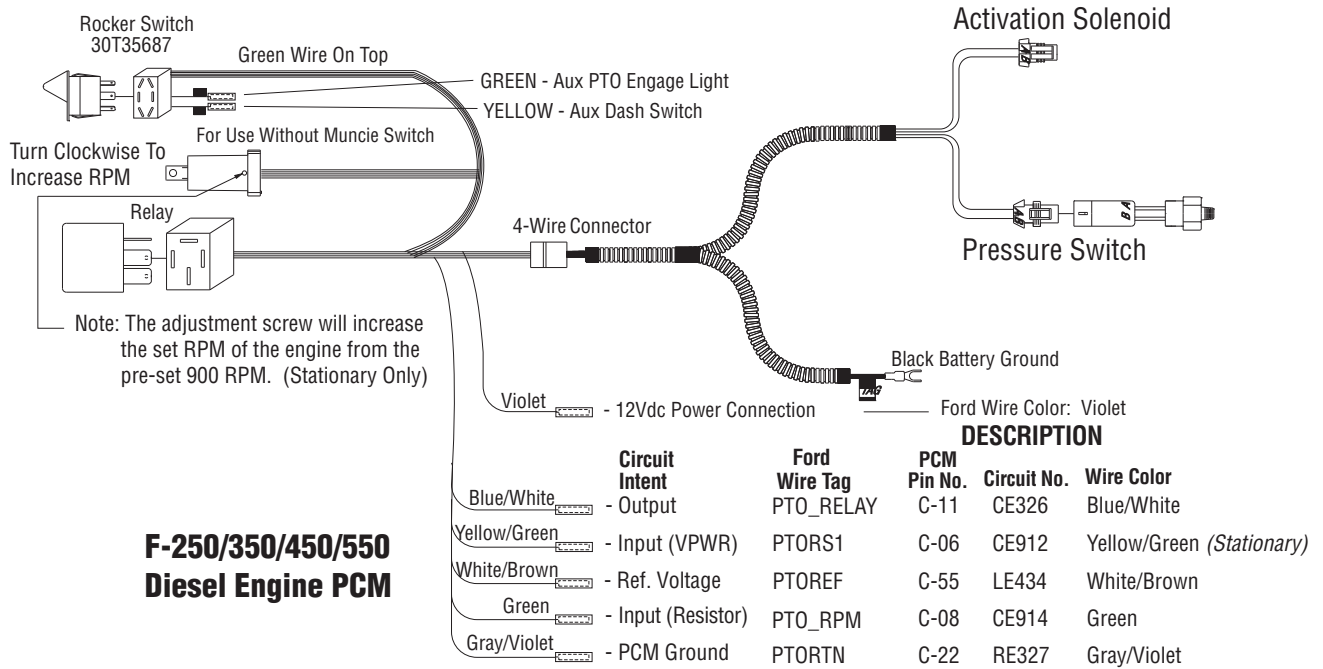


ITEM	QTY	PART NO.	DESCRIPTION
1	1	43T41572	Transmission Fitting (JIC-10mm Str.)
2	1	45T39186	17" Hose Assembly (JIC-JIC)
3	1	43M68014	JIC 90° Fitting
4	1	34T41671	FR66 Wire Harness
5	1	37T35674	Rubber Grommet
6	1	30T35687	Rocker Switch 12V
7	1	36MA1005	Switch Bracket
8	1	36T36271	Face Plate
9	2	20T37914	Metric Stud
10	2	22T39282	Spirallock Nut
11	4	20T37952	Step Stud
12	4	22T37605	Whiz-Lock Nut
N.S.	6	28T35442	Cable Ties
N.S.	1	36MK1007	Dash Bracket Bolt Kit

FORD 2011 – DIESEL ENGINE

FR66 “D” Shift Option Harness

FR66 Wire Harness - 34T41671



FOR MOBILE USE: Use 34T41896 harness. Connect Blue/Gray wire to Ford Blue/Gray wire PTORS2 (Yellow/Green PTORS1 is not connected.) Other wiring is same as above.

MODEL NUMBER CONSTRUCTION

FR66 – F12 09 – D 3 N X

Model

Ford 6-Bolt – FR66

Transmission Gear

Ford 12.18P – F12

Ratio

0.90:1 – 09

Special Features

X – None

Output Type

B – 1-1/4" Rnd. Key**

N – 3/4" 11T Spline

Assembly Arrangement

3

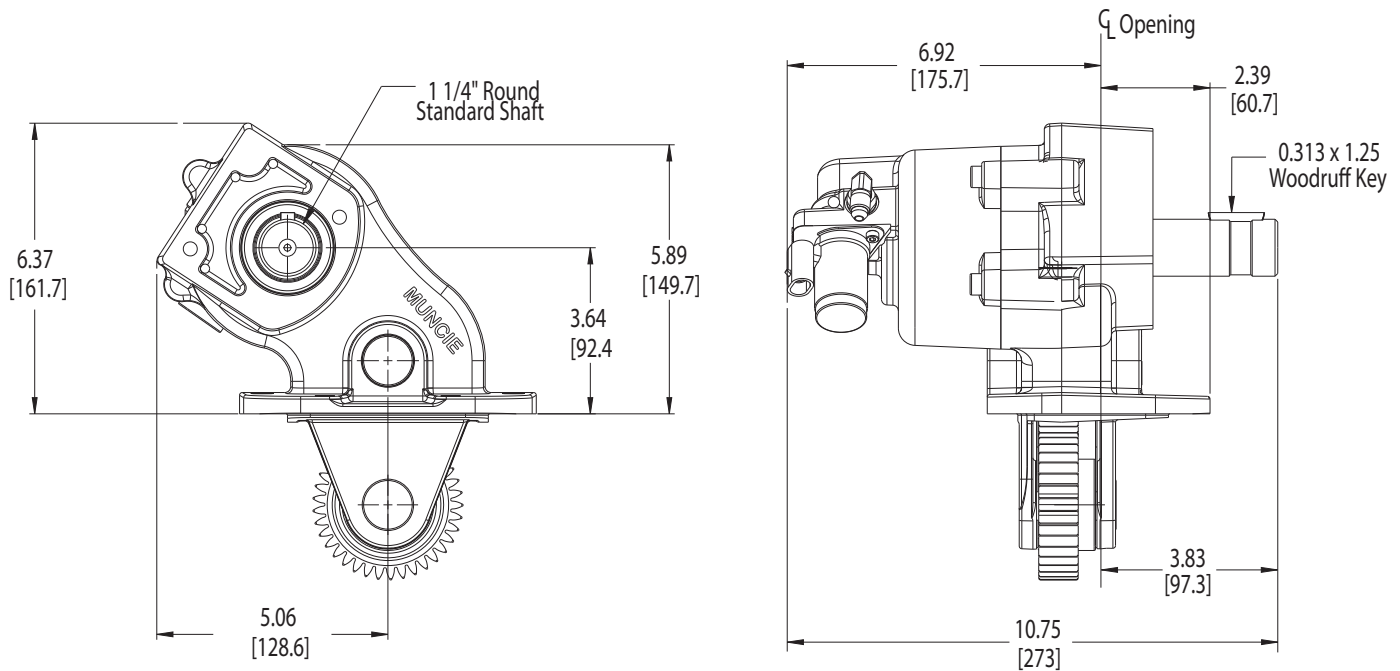
Shift Type

D – Elec./Hyd. (Diesel)

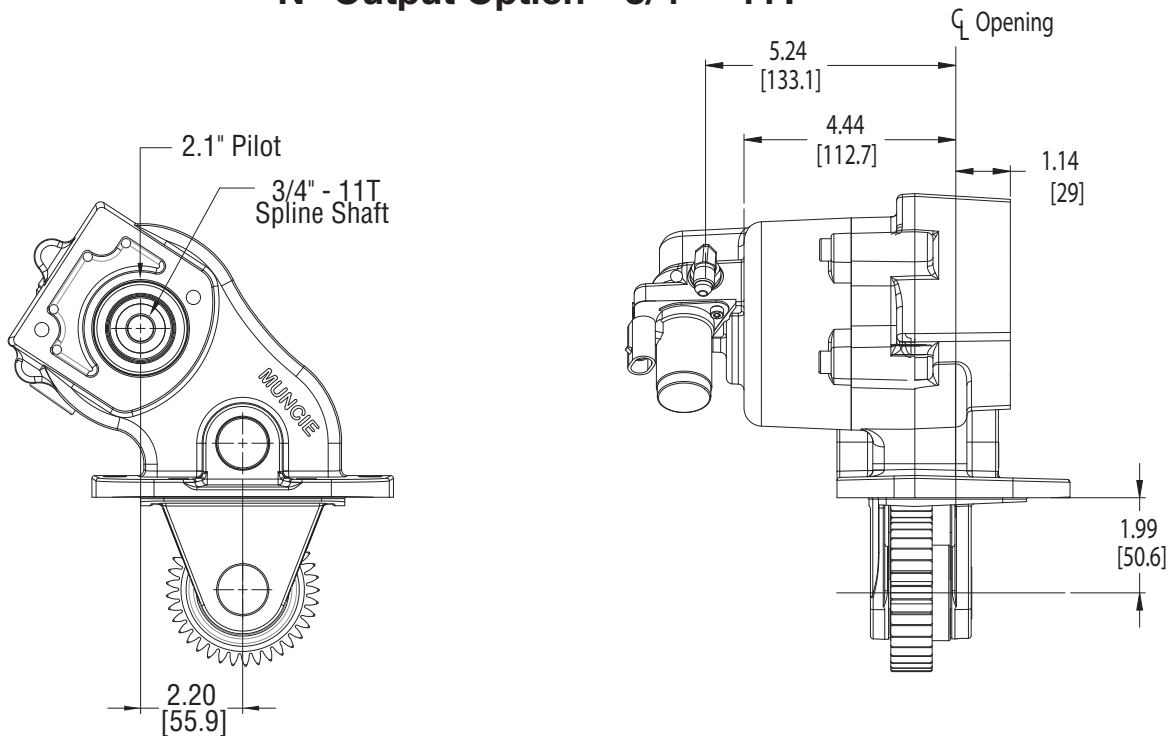
** Driveline output is not recommended on 4x4 Chassis.

FR66 DIMENSIONS IN INCHES (MM)

“B” Output Option – 1-1/4" Round



“N” Output Option – 3/4" – 11T





**Muncie®
Power
Products**

A Member of the Interpump Group

SP10-06 (Rev. 06-19)

201 East Jackson Street • Muncie, Indiana 47305
800-367-7867 • Fax 765-284-6991 • info@munciepower.com • www.munciepower.com

Specifications are subject to change without notice. Visit www.munciepower.com
for warranties and literature. All rights reserved. © Muncie Power Products, Inc. (2010)

Pro Gear and Transmission, Inc. | 906 West Gore St, Orlando, FL 32805
+1 (877) 776-4600 | +1 (407) 872-1901
www.progearandtransmission.com | www.pgtruckparts.com | parts@eprogear.com