



TRANSMISSION
TECHNOLOGIES
Corporation

WEATHERLY INDEX 084

T210-ES42-5

April 1, 1990

ES42-5 Series

Parts List

Replaces T210-ES42-5

Dated April 1, 1988

ES42-5 Series Transmission



For parts or service call us
Pro Gear & Transmission, Inc.



1 (877) 776-4600

(407) 872-1901

parts@eprogear.com

906 W. Gore St.

Orlando, FL 32805





MODEL ES42-5

CONTENTS, RATIO TABLE and IDENTIFICATION

T210-ES42-5

CONTENTS

RATIO TABLE 1

GEARS and RELATED PARTS 2-5

 DRIVE GEAR GROUP 2-3

 MAINSHAFT GROUP 2-3

 COUNTERSHAFT GROUP 4-5

 REVERSE IDLER SHAFT GROUP 4-5

 DRIVE GEAR TABLE 5

CLUTCH HOUSING DIMENSIONS 6-7

DRIVE GEAR BEARING CAP GROUP 8-9

DRIVE GEAR BEARING CAP CHART WITH CLUTCH APPLICATIONS 9

CASE GROUP and TABLE 10-11

REAR BEARING CAP CHART WITH BRAKE APPLICATIONS 12

REAR BEARING CAP GROUP and RELATED PARTS 12-13

SHIFT BAR and FORK ASSEMBLY 14

SHIFT LEVER and DOME ASSEMBLY 15

CLUTCH RELEASE CODE TABLE 16-17

REMOTE CONTROL ASSEMBLY 18

COMPANION FLANGES and END YOKES 19

OVERHAUL KITS—MAJOR and MINOR 20-21

TABULATED BILLS OF MATERIALS 22-25

RATIO TABLE

SPEEDS	MODELS	
	ES42-5A	ES42-5D
1st	7.22	7.22
2nd	3.88	3.88
3rd	2.21	2.21
4th	1.42	1.26
5th	1.00	1.00
Rev.	7.22	7.22

IDENTIFICATION

The Name Plate (NP-96) affixed to the RIGHT side of the Transmission is stamped with information:

SERIAL

B/M No. MODEL

Abbreviations used in this parts list include:
 N.S. — Not Shown
 N.S.S. — Not Sold Separately
 N.R. — Not Required

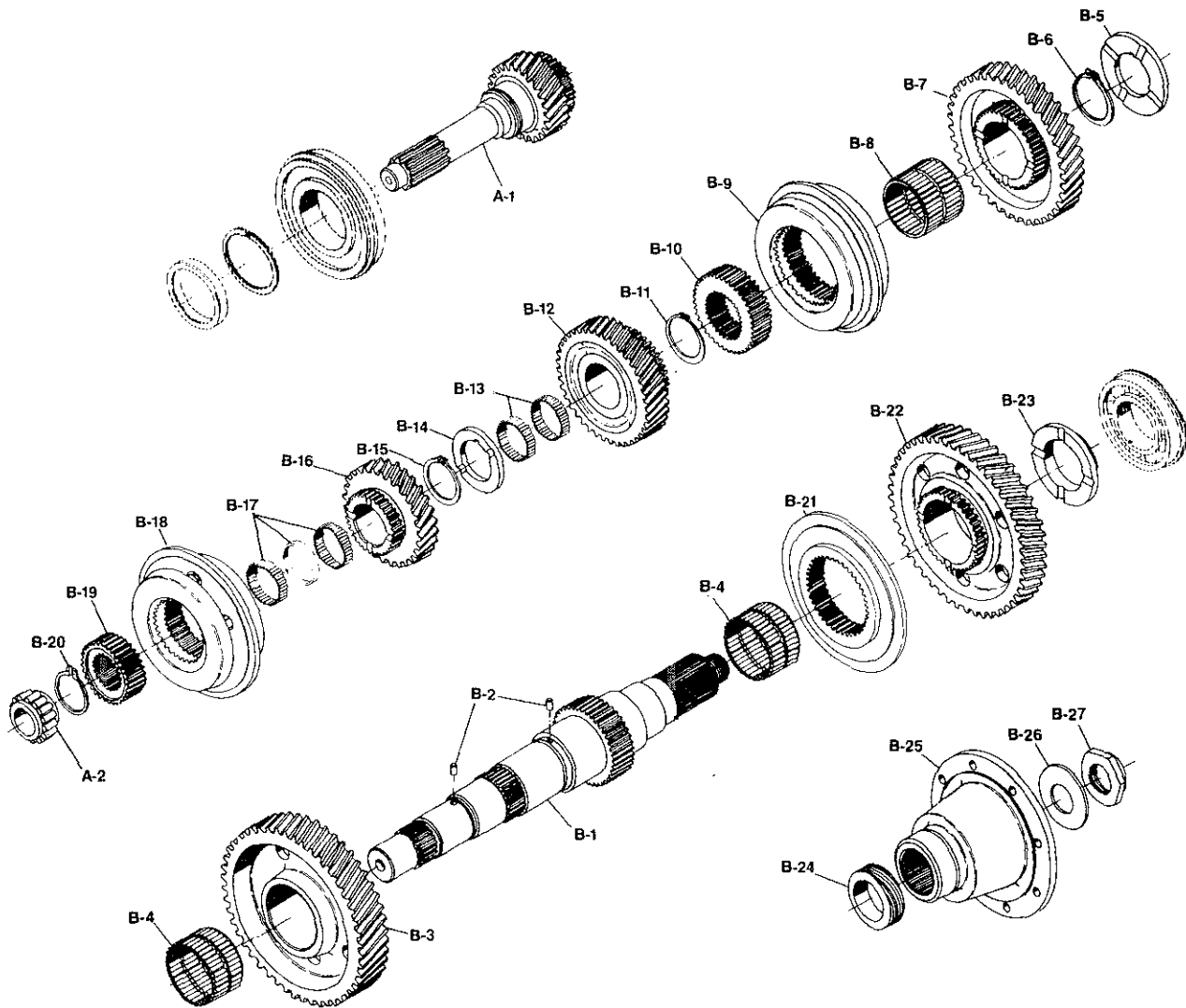
In requesting more information on these transmissions, furnish the B/M No. and the Serial Number.

MODEL ES42-5

GEARS and RELATED PARTS



T210-ES42-5



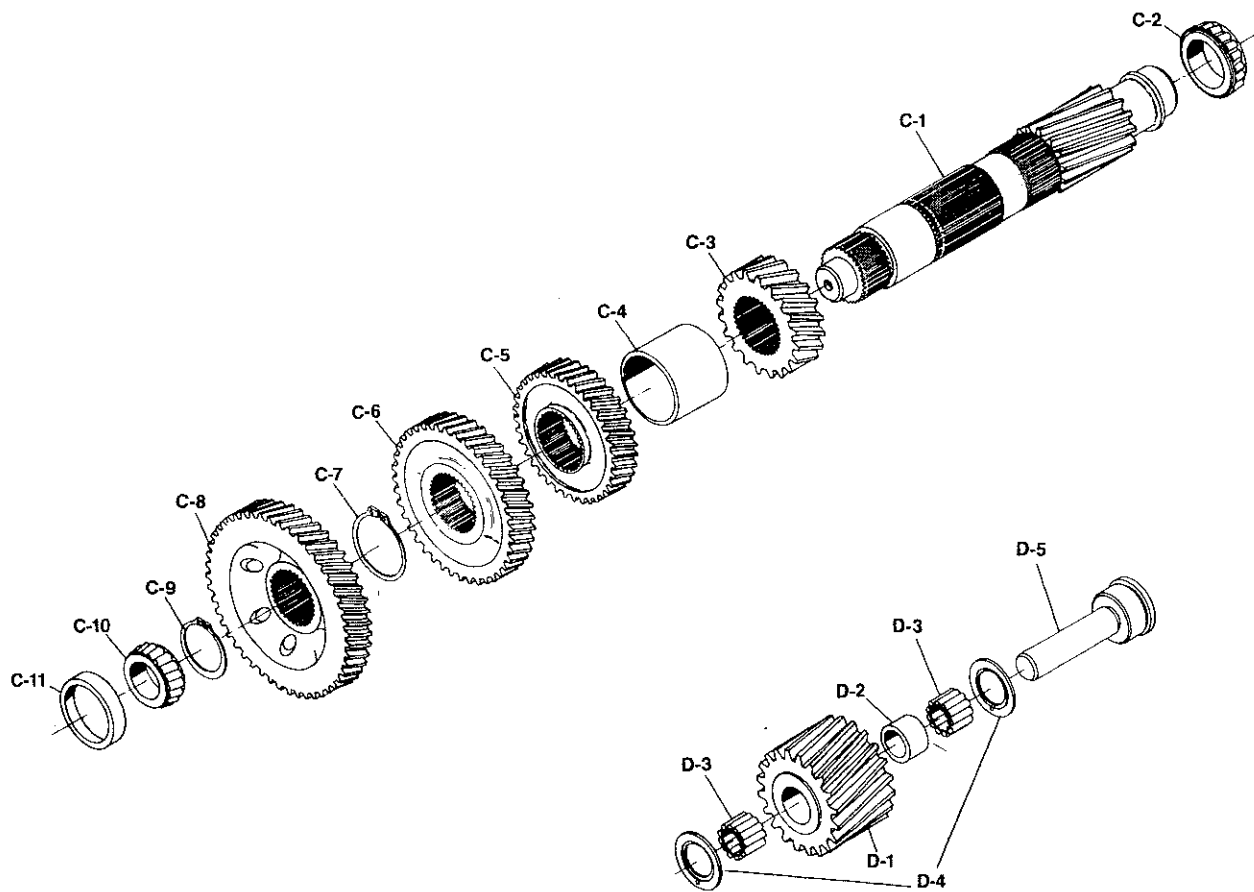


Ref. No.	Part Number	Part Description	Qty.
DRIVE GEAR GROUP—INPUT			
A-1	See Tab Bills	Gear, drive (see table page 5)	1
A-2	550986	Bearing, M/S pocket	1
MAINSHAFT GROUP—OUTPUT			
B-1	40-362-3	Mainshaft	1
B-2	545087	Pin-thrust washer lock	2
B-3	40-8-7	Gear-1st speed (46T)	1
B-4	550963	Bearing—1st & reverse gear needle	2
B-5	40-47-2	Thrust washer—1st & 2nd speed	1
B-6	40-381-4	Ring, snap, 1st & 2nd thrust washer	1
B-7	40-8-5	Gear—2nd speed (38T)	1
B-8	550968	Bearing—2nd speed needle	1
B-9	313471X	Synchronizer—2nd & 3rd speed	1
B-10	40-466-2	Gear—2nd & 3rd speed clutch	1
B-11	40-381-3	Ring, snap, 2nd & 3rd, M/S clutch	1
B-12	40-8-17	Gear—3rd speed (39T)	1
B-13	313661X	Bearing Kit—M/S 3rd needle	1
B-14	40-47-3	Washer—thrust, 3rd & 4th speed	1
B-15	40-381-2	Ring, snap—3rd & 4th, thrust washer	1
B-16	40-8-19	Gear—4th speed	1
	40-8-21	(28T) for ES42-5A (26T) for ES42-5D	
B-17	313662X	Bearing Kit— needle & spacer 4th	1
B-18	313558X	Synchronizer—4th & 5th speed	1
B-19	49-466-2	Gear—4th & 5th speed clutch (33T)	1
B-20	40-381-1	Ring, snap, 4th & 5th clutch gear	1
B-21	40-465-11	Collar, clutch—1st & reverse	1
B-22	40-8-9	Gear—reverse (46T)	1
B-23	49-47-3	Washer, thrust—reverse	1
B-24	See tab bills	Gear—speedometer drive	1
or	53-37-1	Spacer—used in place of gear	1
B-25	See tab bills	Companion flange or yoke	1
B-26	53-205-1	Washer—mainshaft nut	1
B-27	501200	Nut—mainshaft (1¼"-18 hex)	1

MODEL ES42-5

GEARS and RELATED PARTS

T210-ES42-5



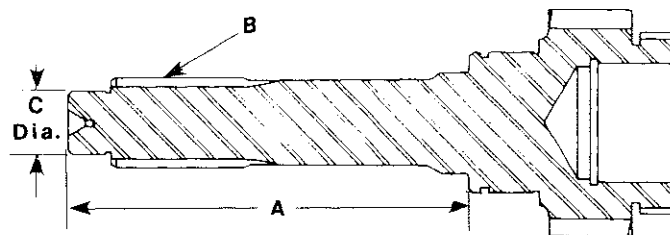


MODEL ES42-5

GEARS and RELATED PARTS

T210-ES42-5

Ref. No.	Part Number	Part Description	Qty.
COUNTERSHAFT GROUP			
C-1	40-30-1	Countershaft	1
C-2	550966	Bearing—countershaft rear	1
C-3	40-196-5	Gear—2nd speed (20T)	1
C-4	40-37-1	Spacer—2nd & 3rd speed gear	1
C-5	40-196-3	Gear—3rd speed (36T)	1
C-6		Gear—4th speed	1
	40-196-1	(40T) for ES42-5A	
	40-196-7	(42T) for ES42-5D	
C-7	40-381-5	Ring, snap—C/S 4th speed gear	1
C-8	40-1-1	Gear—drive (49T)	1
C-9	40-381-3	Ring, snap 2nd & 3rd clutch gear	1
C-10	550964	Bearing, cone—C/S front	1
C-11	550965	Bearing, cup—C/S front	1
REVERSE IDLER SHAFT GROUP			
D-1	40-5-1	Gear—reverse idler (21T)	1
D-2	97-37-1	Spacer—bearing	1
D-3	550886	Bearing—reverse idler	2
D-4	974-W	Washer—thrust, reverse idler	2
D-5	40-60-1	Shaft—reverse idler	1



DRIVE GEAR TABLE

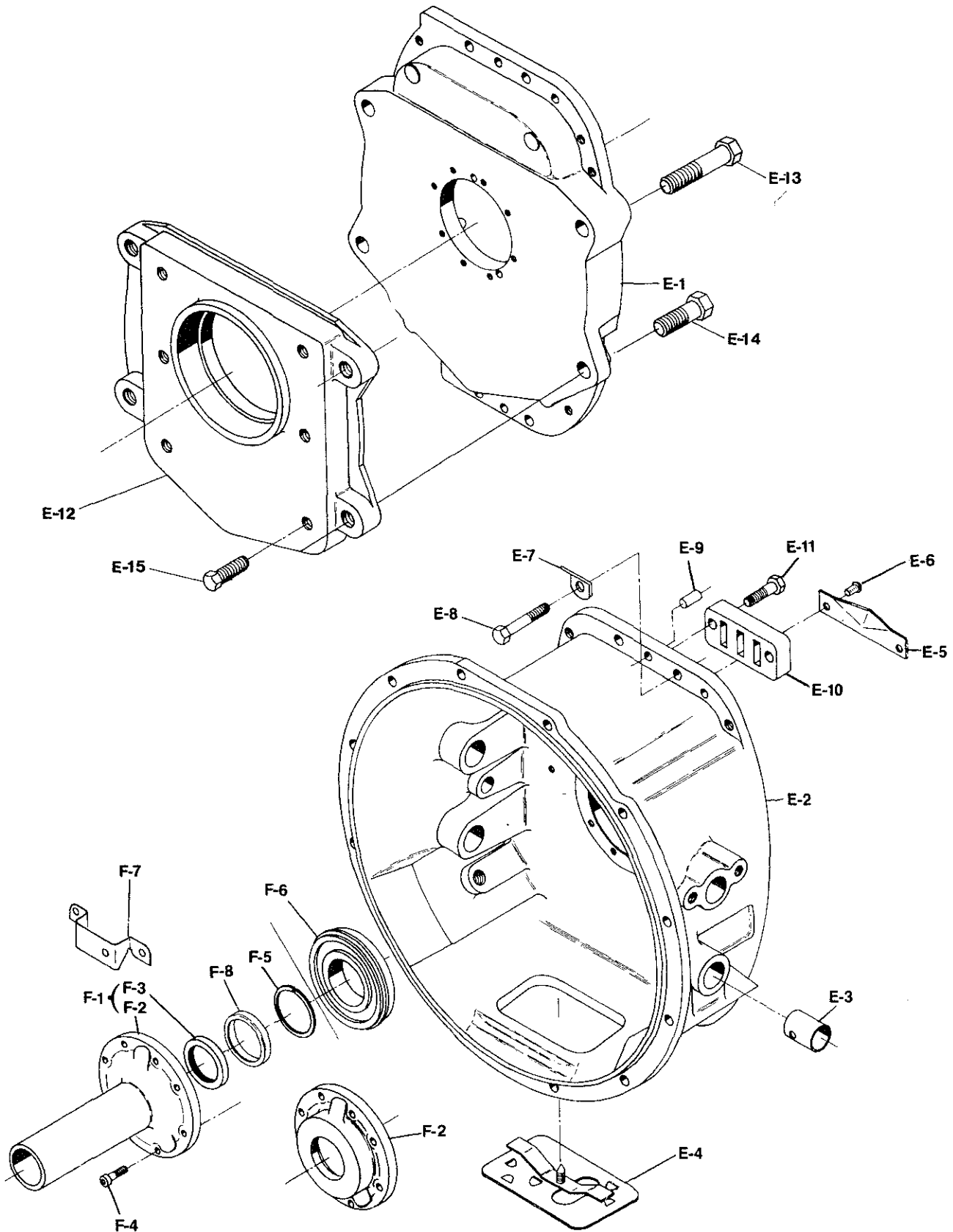
A Length	B Spline Dia. Teeth	C-Pilot Size	Drive Gear Part No.
6.439"	1 ³ / ₈ "-10	.9837"	40-35-17-1X*
9.929"	1 ¹ / ₂ "-10	.9837"	40-35-18-1X*
8.179"	1 ¹ / ₂ "-10	.9837"	40-35-19-1X*
7.239"	1 ¹ / ₂ "-10	.9837"	40-35-20-1X*
9.875"	1 ³ / ₄ "-10	1.1800"	40-35-21-1X*
9.875"	1 ³ / ₄ "-10	.9837"	40-35-22-1X*

*Consists of (1) Drive Gear and (1) 49-468-2.

MODEL ES42-5 CLUTCH HOUSING



T210-ES42-5





MODEL ES42-5

CLUTCH HOUSING

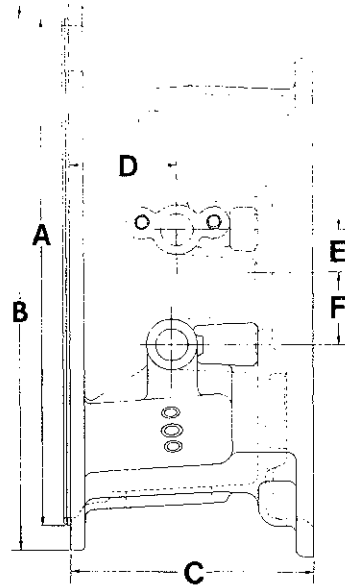
T210-ES42-5

Ref. No.	Part Number	Part Description	Qty.
CLUTCH HOUSING			
E-1	49-360-3-1X*	Retainer—case front end (Ford—gas only)	1
	49-360-4-1X*	Retainer—case front end (GMC—gas only)	1
E-2	See Table	Clutch housing	1
E-3	128C-20	Bushing	2
E-4	46-96-2-1X	Hand hole cover assembly	1
E-5	40-468-1	Oil trough	1
E-6	545088	Pin	2
E-7	330564-1	Lift hook	1
E-8	545082-2	Bolt—clutch housing to case MF10 × 1.25 × 30mm	14
and	545082-3	Bolt—clutch housing MF10 × 1.25 × 35mm (used in the (2) lower holes)	2
E-9	545086	Dowel pin	2
E-10	40-477-1	Support—front shift bar	1
E-11	545082-3	Bolt—shift bar support MF10 × 1.25 × 35mm	2
E-12‡	40-215-1	Adaptor—clutch housing	1
E-13‡	545008-6	Screw—.625-11 × 3.500"	2
E-14‡	545008-3	Screw—.625-11 × 1.750"	2
E-15‡	545001	Screw—.500-13 × 1.25"	6

*Retainer assemblies 49-360-3-1X and 49-360-4-1X contain 1 oil trough (40-468-1) and 2 pins (545088).
 ‡Required with #3 clutch housing—with 49-360-3-1X

SAE		
Size No.	A Pilot Dia.	B O.D.
1	20 ¹ / ₈ "	21 ³ / ₄ "
2	17 ⁵ / ₈ "	19 ¹ / ₄ "
3	16 ¹ / ₈ "	17 ³ / ₄ "

CLUTCH HOUSING DIMENSIONS



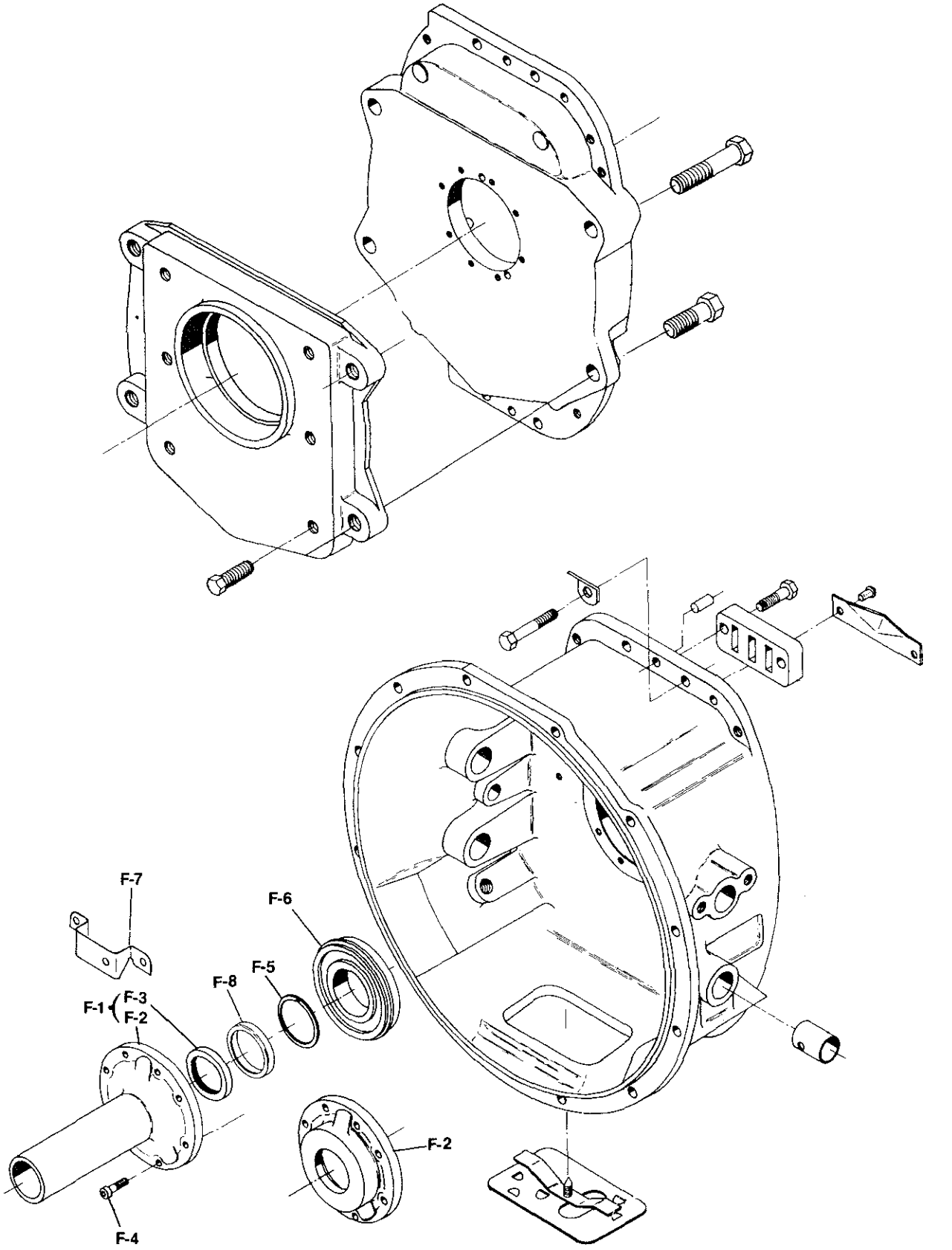
CLUTCH HOUSING					RELEASE SHAFT HOLE			
Assembly No. E-2	Part No. E-2	Casting No.	S A E	C Length	Dia.	D C/L to Front Face	E Above C/L	F Below C/L
46-518-21-1X	46-518-21	C102C-477	3	5 ¹ / ₁₆ "	1"	3" 2 ¹⁷ / ₃₂ "	1 ¹ / ₂ " —	— 2 ⁵ / ₈ "
49-518-4-2X	49-518-4	C40-518-2	2	8 ¹⁷ / ₃₂ "	1"	3 ³ / ₄ " 3 ¹⁹ / ₃₂ "	1 ¹ / ₂ " —	— 2 ¹ / ₂ "
49-518-5-2X	49-518-5	C40-518-2-1	2	8 ¹⁷ / ₃₂ "	1"	3 ³ / ₄ " 2 ⁹ / ₁₆ "	1 ¹ / ₂ " —	— 3"
49-518-6-1X	49-518-6	C40-518-4-1	2	6.802"	—	—	—	—
49-518-7-2X	49-518-7	C40-518-4	2	4 ³ / ₄ "	—	—	—	—

†Includes (4) release shaft bushings 128C-20.

MODEL ES42-5 CLUTCH HOUSING

SPICER®
DANA

T210-ES42-5





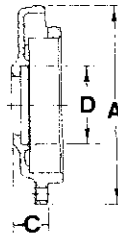
MODEL ES42-5

DRIVE GEAR BEARING CAP GROUP

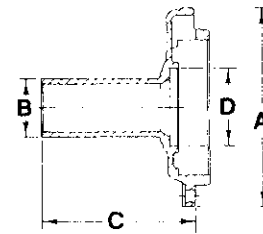
T210-ES42-5

Ref. No.	Part Number	Part Description	Qty.
DRIVE GEAR BEARING CAP GROUP			
F-1	See Tab Bills	Cap & seal assembly (see table below)	1
F-2	N.S.S.	Cap	1
F-3	40-463-6-1X	Seal—drive gear bearing cap (stem only)	1
or	40-463-4-1X	Seal—drive gear bearing cap (flat only)	1
F-4	545093	Cap screw—drive gear bearing cap (M6 × 1.00 × 25mm)	8
F-5	46-381-1	Snap ring	1
F-6	550988	Bearing—drive gear front	1
F-7	40-411-1	Return spring bracket (Navistar only)	1
F-8	49-468-2	Ring, oil	1

FLAT TYPE



STEM TYPE



DRIVE GEAR BEARING CAP CHART

A Outside Diameter	B Stem Diameter	C Length	D Inside Diameter For Oil Seal	FRONT BEARING CAP F-1	
				Part Number N.S.S. F-2	Assy. Includes Oil Seal F-3
FLAT TYPE—For Spicer Pull Type Clutches					
PULL TYPE RELEASE					
5 ⁵ / ₁₆ "	—	1 ⁷ / ₁₆ "	2 ⁹ / ₁₆ "	40-19-40	40-19-40-1X
STEM TYPE—For all Push Type Clutches					
PUSH TYPE RELEASE					
5 ⁵ / ₁₆ "	1 ¹⁵ / ₁₆ "	6 ¹⁷ / ₆₄ "	2 ¹ / ₁₆ "	40-19-1	40-19-1-1X
5 ¹ / ₈ "	1 ³ / ₄ "	4 ⁹ / ₆₄ "	2 ¹ / ₁₆ "	40-19-3	40-19-3-1X
5 ⁵ / ₁₆ "	1 ⁷ / ₈ "	5 ⁴³ / ₆₄ "	2 ¹ / ₁₆ "	40-19-5	40-19-5-1X
5 ¹ / ₄ "	1 ⁷ / ₈ "	4 ³ / ₈ "	2 ¹ / ₁₆ "	40-19-6	40-19-6-1X
5 ⁵ / ₁₆ "	1 ⁷ / ₈ "	6 ²¹ / ₃₂ "	2 ¹ / ₁₆ "	40-19-24	40-19-24-1X
5 ¹ / ₈ "	1 ¹⁵ / ₁₆ "	6 ¹⁷ / ₆₄ "	2 ¹ / ₁₆ "	40-19-29	40-19-29-1X
5 ¹ / ₈ "	1 ⁷ / ₈ "	5 ⁴³ / ₆₄ "	2 ¹ / ₁₆ "	40-19-30	40-19-30-1X
5 ⁵ / ₁₆ "	1 ⁷ / ₈ "	6 ²¹ / ₃₂ "	2 ¹ / ₁₆ "	40-19-31	40-19-31-1X
5 ⁵ / ₁₆ "	1 ⁷ / ₈ "	4 ⁵⁹ / ₆₄ "	2 ¹ / ₁₆ "	40-19-32	40-19-32-1X
5 ⁵ / ₁₆ "	1 ⁷ / ₈ "	6 ²¹ / ₃₂ "	2 ¹ / ₁₆ "	40-19-35	40-19-35-1X

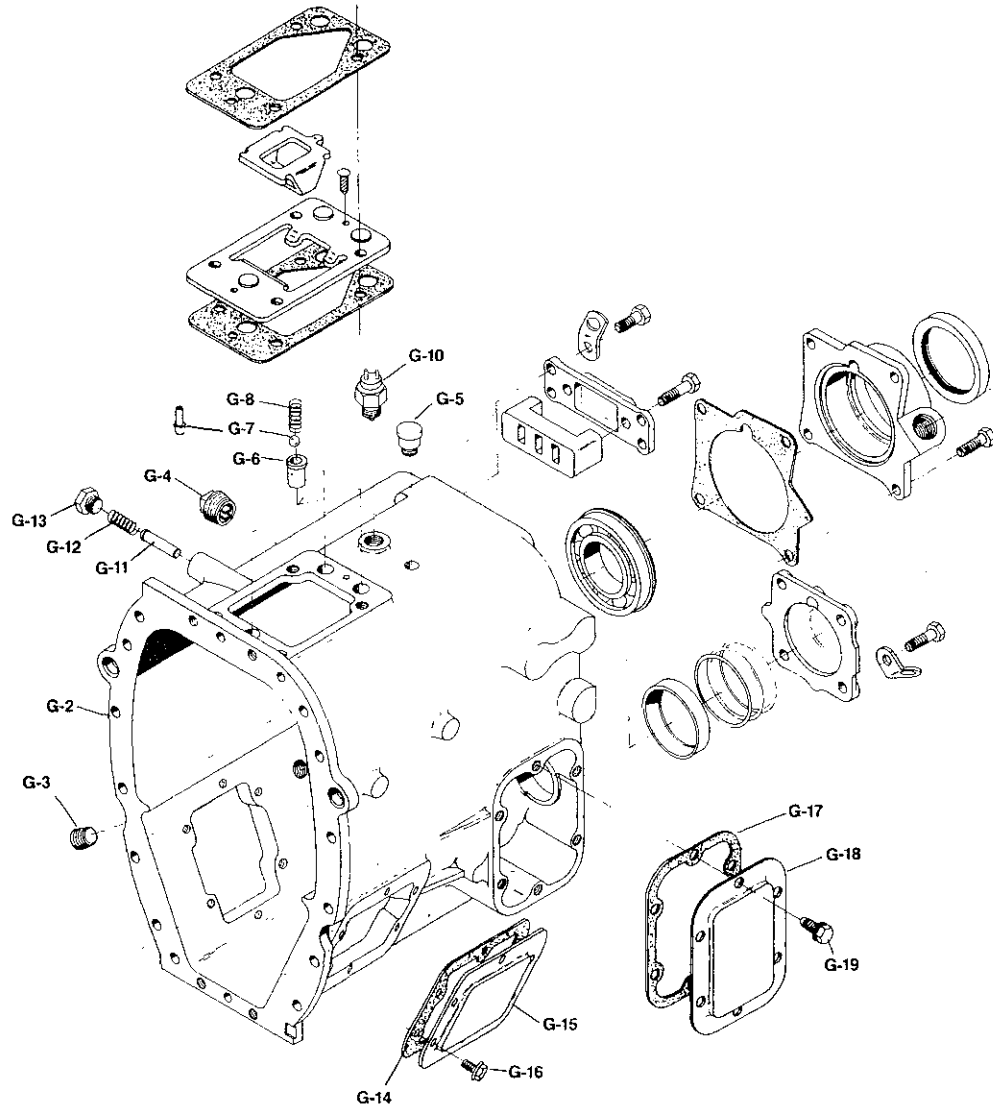
N.S.S.—Not Sold Separately

MODEL ES42-5

CASE GROUP



T210-ES42-5





Ref. No.	Part Number	Part Description	Qty.
CASE GROUP			
G-1	See Tab Bills	Case assembly (see case table below)	1
G-2	N.S.S.	Case	1
N.S.	NP-96	Nameplate	1
N.S.	252-SP	Pin—nameplate	4
G-3	500100	Plug—filler (3/4"-14 N.P.T.F.)	1
G-4	62-39-3	Plug—magnetic drain (3/4"-14 N.P.T.F.)	1
N.S.	330800	Plug—side hole (3/8"-16 x 3/4")	2
N.S.	330934	Magnet, ceramic (case, inside, bottom, front)	1
G-5	312268	Breather	1
G-6	40-487-1	Insert—poppet spring & ball	3
G-7	40-80-1	Ball—poppet (BSSN J880705001)	3
or	101-438-4	Plunger—poppet (ASSN J880705001)	3
G-8	97-72-23	Spring—shift bar poppet	3
G-10	313539	Switch—back-up lite (Ford only)	1
	313538	Switch—back-up lite (Navistar only)	1
	313552	Switch—back-up lite (GMC only)	1
G-11	40-438-1	Pin—1st & reverse select plunger	1
G-12	62-72-8	Spring—1st & reverse shift finger plunger (standard)	1
or	30-72-6	Spring—1st & reverse (Hino Motors LTD)	1
or	40-72-3	Spring—1st & reverse (Spicer DriveTrain Australia)	1
G-13	40-59-1	Plug—1st & reverse plunger	1
or	40-59-2	Plug—reverse stop (w/o reverse gear)	1
G-14	97-324-1-1X	Gasket—6 bolt P.T.O. aperture cover (l & r)	2
G-15*	50-267-2	Cover—6 bolt P.T.O. aperture (l & r)	2
G-16	330800	Bolt—P.T.O. aperture (l & r) (3/8"-16 x 3/4")	12
G-17	49-324-1-1X	Gasket—reverse idler cover	1
G-18	40-96-3	Cover—reverse idler	1
G-19	545085	Bolt—reverse idler cover (M10 x 1.5 x 20mm)	6

*For B/M 301438-37 (Navistar) this cover is replaced with Part No. 40-267-1X PTO cover. Used for a Magnetic Speed Sensor. Service with 40-267-1-1X (1671857C1).

CASE TABLE

Case Assembly	Case Casting No. (N.S.S.)	Plug—Side Hole (N.S.)	4 Pins N.S. (252-SP) Nameplate N.S.	OIL PLUG		G-6 Poppet Insert	G-5 Breather	Used by
				G-3 Filler	G-4 Drain			
40-15-6-1X	C40-15-7	—	NP-96	500100	62-39-3	40-487-1	312268	Ford
40-15-8-1X	C40-15-7	—	NP-96	500100	62-39-3	40-487-1	312268	GMC
40-15-9-1X	C40-15-7	330800	NP-96	500100	62-39-3	40-487-1	312268	Navistar

BSSN—Before Starting Serial Number
 ASSN—After Starting Serial Number
 N.S.—Not Shown
 N.S.S.—Not Sold Separately

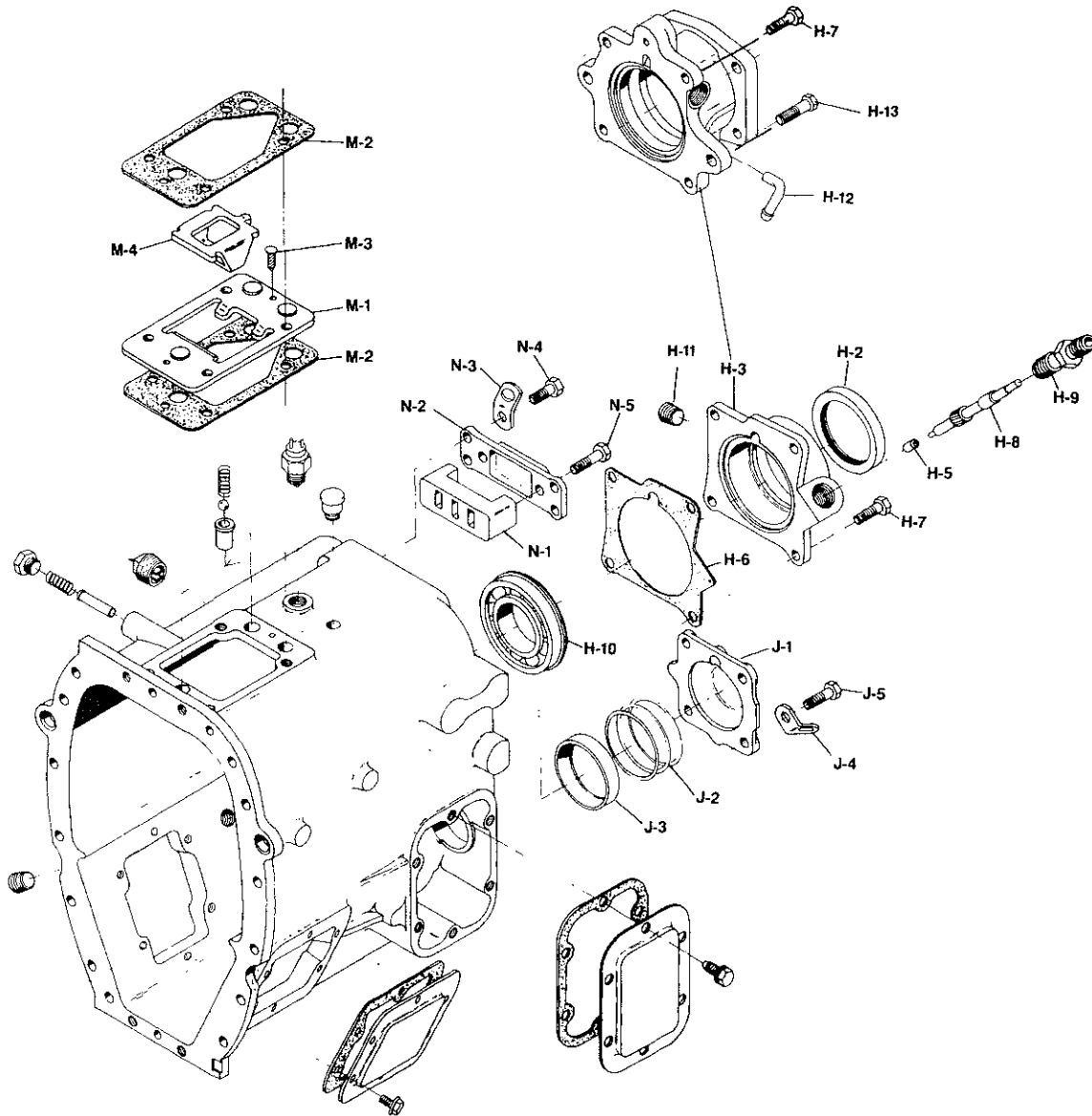
MODEL ES42-5

SPICER®



T210-ES42-5

REAR BEARING CAP GROUP & RELATED PARTS



BEARING CAP ASSEMBLY INCLUDES

Part Number	Oil Seal	Casting Number	Speedometer Bushing	Brake	Bolt*
H-1	H-2	—	H-5		
40-19-19-2X	63-463-1	40-19-19	60-475-1	DCM	{ 545082-3 (4) H-7 } { 545084-2 (2) H-13 }
40-19-22-2X	63-463-1	40-19-22	60-475-1	DCM	{ 545082-3 (4) H-7 } { 545084-2 (2) H-13 }
40-19-38-2X	63-463-1	40-19-38	60-475-1	—	545082-3 (4) H-7
40-19-39-1X	63-463-1	40-19-39	—	—	545082-3 (4) H-7
40-19-41-2X	63-463-1	40-19-41	—	DCM	{ 545082-3 (4) H-7 } { 545084-2 (2) H-13 }
40-19-42-2X	63-463-1	40-19-42	—	DCM	{ 545082-3 (4) H-7 } { 545084-2 (2) H-13 }
40-19-43-2X	63-463-1	40-19-43	—	—	545082-3 (4) H-7

*Refer to Spicer Service Topics #43—Dated 4-18-89.



Ref. No.	Part Number	Part Description	Qty.
MAINSHAFT REAR BEARING CAP GROUP			
H-1	See Tab Bills	Cap assembly—mainshaft bearing cap (see page 12)	1
H-2	63-463-1	Oil seal—mainshaft rear bearing cap	1
H-3	See Tab Bills	Cap sub-assembly—mainshaft rear (see page 12)	1
H-4	N.S.S.	Cap—mainshaft rear bearing	1
H-5	See Page 12	Bushing—speedometer	1
H-6	40-223-1	Gasket—mainshaft rear bearing cap	1
or	40-223-3	Gasket—mainshaft rear bearing cap (brake only)	1
H-7	545082-3	Bolt—rear bearing cap (MF10 × 1.378 × 35mm)	4
and	545084-4	Plug—case (rear holes) (MF12 × 1.25 × 16mm) (used with 40-15-9 when using an air brake rear bearing cap	2
H-8	See Tab Bills	Gear—speedometer drive	1
H-9	55-454-1	Sleeve—1¼" speedometer driven gear	1
or	97-454-2-1X	Sleeve and oil seal	1
N.S.	44-539-1	Cap—speedometer dust	1
N.S.	55-334-1	Plug—speedometer (use w/o driven gear)	1
N.S.	545106	Plug—speedometer outlet (Ford) (electronic)	1
H-10	550989	Bearing—mainshaft rear	1
H-11	545021	Plug—electronic speedometer (Ford)	1
H-12	37179	Tube—vent (assembly toward front of trans)	1
H-13	545084-2	Bolt—cap (D.C.M. brake) (MF12 × 1.25 × 35mm)	2
COUNTERSHAFT REAR BEARING CAP GROUP			
J-1	40-22-3	Cap—countershaft rear bearing	1
J-2		Shim—countershaft rear bearing	
	40-228-1-1	(.0055/.0045)	1
	40-228-1-2	(.1110/.0090)	1
	40-228-1-3	(.0165/.0135)	1
J-3	550967	Cup—countershaft rear bearing	1
J-4	330564-1	Lift hook	1
J-5	545002-4	Bolt—countershaft rear bearing cap (3/8"-16 × 1 3/4")	4
INTERLOCK GROUP			
M-1	40-200-1	Plate—interlock retainer	1
M-2	40-155-1	Gasket—case to interlock plate	2
M-3	545091	Screw—drive (interlock retainer)	2
M-4	40-200-2	Plate—interlock	1
REAR SHAFT BAR SUPPORT GROUP			
N-1	40-477-2	Support—rear shift bar	1
N-2	40-96-1	Cap—rear shift bar	1
N-3	330564-1	Lift hook	1
N-4	545082-1	Bolt—shift bar cap (MF10 × 1.25 × 25mm)	4
N-5	545082-3	Bolt—shift bar support (MF10 × 1.25 × 35mm)	2

N.S.—Not Shown

N.S.S. Not Sold Separately

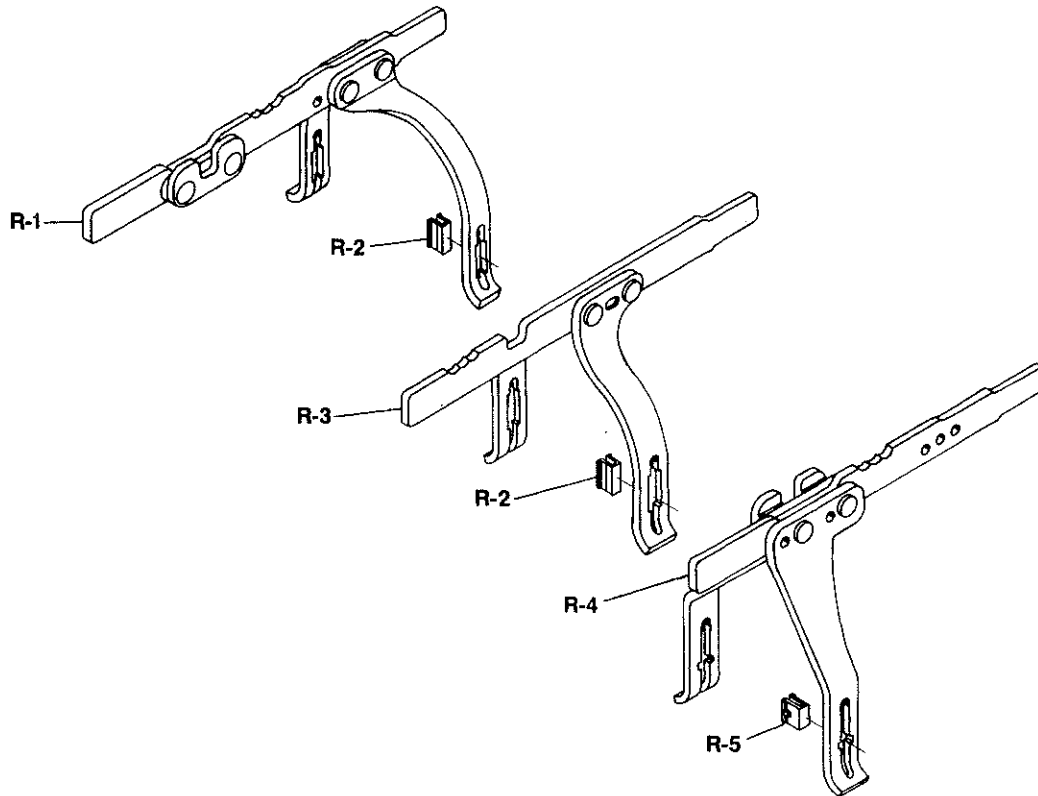
MODEL ES42-5

SPICER®



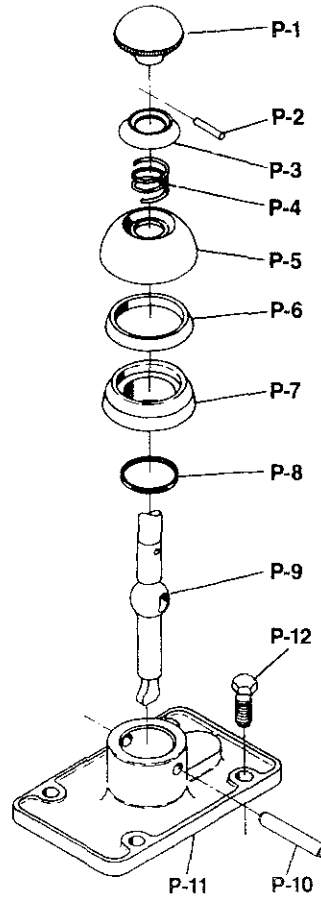
T210-ES42-5

SHIFT BAR and FORK ASSEMBLY



Ref. No.	Part Number	Part Description	Qty.
		SHIFT BAR and FORK ASSEMBLY	
R-1	313685-1X	Shift fork and bar—1st & reverse (includes (2) 49-468-3)	1
R-2	49-486-3	Clip—1st & reverse shift fork	2
R-3	313686-1X	Shift fork and bar—2nd & 3rd (includes (2) 40-486-1)	1
R-4	40-486-1	Clip—2nd, 3rd, 4th & 5th shift fork	4
R-5	313687-1X	Shift fork and bar—4th & 5th (includes (2) 40-486-1)	1

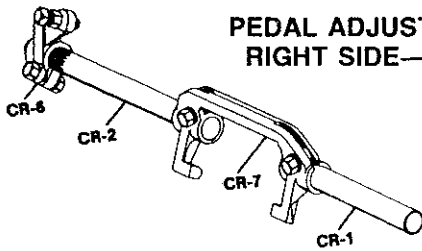
PARTS LISTED IN THIS CATALOG MAY NO LONGER BE AVAILABLE, USE WITH TRANSMISSION SUPERSEDING LIST.



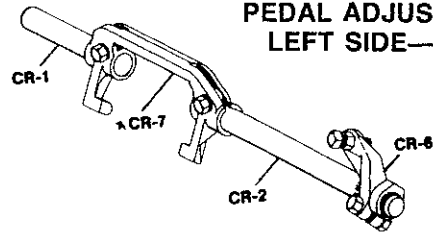
Ref. No.	Part Number	Part Description	40-17-1-12X	40-17-3-2X	40-17-3-5X
	See Tab Bills	Shift lever and dome assembly	1	1	1
P-1	39Q-27	Handle—shift lever	1	1	1
P-2	286-SP	Pin—shift lever collar	1	1	1
P-3	55Q-7	Collar—compression	1	1	1
P-4	56Q-25	Spring—compression	1	1	1
P-5	54Q-13	Cup—compression	1	1	1
P-6	69Q-6	Washer—compression	1	1	1
P-7	54Q-20	Insert—dome	1	1	1
P-8	30-463-9	“O” ring—dome seal	1	1	1
P-9	25Q-1701-20	Shift lever—straight (30" length)	1	—	—
	25Q-1701-49	Shift lever—straight (33" length)	—	1	—
	25Q-2461	Shift lever—lower end (RVI)	—	—	1
P-10	53Q-15	Shaft—rock	1	1	1
P-11	40-17-1	Dome—shift lever (overall height 2")	1	—	1
	40-17-3	Dome—shift lever (overall height 3.31")	1	1	—
P-12	545028	Bolt—shift tower (7/16" -14 x 1 1/4") (not included in assembly)	4	4	4

PARTS LISTED IN THIS CATALOG MAY NO LONGER BE AVAILABLE, USE WITH TRANSMISSION SUPERSEDING LIST.

MODEL ES42-5 CLUTCH RELEASE CODE TABLE



**PEDAL ADJUSTING ARM
RIGHT SIDE—310473X**



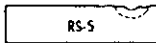
**PEDAL ADJUSTING ARM
LEFT SIDE—310233X**

CR-1 SHORT SHAFT

Part No.	Length
106C-1071	4.062"
106C-1141	5.125"
106C-1142	6.125"
106C-1185	5.750"
106C-1216	4.750"
106C-1278	4.812"
106C-1360	5.312"
106C-1375	6.781"
106C-1498	6.500"
106C-1544	7.000"
330601-1	6.250"

CR-2 LONG SHAFT (Cont'd)

Part No.	Type	Length
106C-1083	RS-8	7.969"
106C-1094	RS-8	8.469"
106C-1123	RS-8	12.968"
106C-1169	RS-8	9.125"
106C-1315	RS-8	7.625"
106C-1367	RS-8	10.312"
106C-1375	RS-8	6.781"
106C-1417	RS-8	7.250"
106C-1422	RS-8	7.500"
106C-1490	RS-8	16.000"
106C-1515	RS-5	11.375"
106C-1529	RS-5	8.312"
330610-5	RS-8	9.469"
330610-11	RS-8	10.750"
46-510-9	RS-5	7.125"
330610-10	RS-8	9.500"



CR-2 LONG SHAFT

Part No.	Type	Length
106C-438	RS-5	14.000"
106C-588	RS-5	7.000"
106C-617	RS-8	10.469"
106C-839	RS-8	11.469"
106C-939	RS-8	10.000"
106C-953	RS-8	9.750"
106C-959	RS-8	11.968"
106C-960	RS-8	8.719"
106C-1046	RS-8	8.968"
106C-1047	RS-8	9.469"

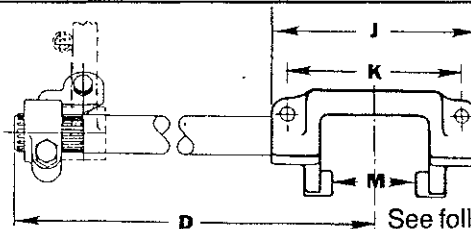
CR-6 PEDAL ADJ. ARM

310233X	For Left Side Mtg.
310473X	For Right Side Mtg.
47-526-1-1X*	Lever Type 7¼"
310873X*	Lever Type 7¼"

*Lever type can be used on either right or left side.

THRU SHAFT (used with Push Type Clutch)

Part No.	Type	Length
106C-1566	Splined	19.125"
106C-1550	Keyed	16.375"
106C-1558	Keyed	19.000"
106C-1578	Splined	19.500"
49-510-1	Keyed	19.120"
97-510-2	Splined	19.313"



See following page for "D" dimensions.

CLUTCH RELEASE YOKES

CR-7	Forging No.	Used With	Type	J	K	M
105C-64	F105C64	Spicer 15½" SP	Pull	8.000"	6.500"	4.895"
105C-68	F105C99	Spicer 14" SP	Pull	7.125"	5.750"	4.132"
105C-117 ¹	F105C118	Spicer & Others	Push	8.375"	7.000"	4.885"
105C-124 ²	F105C125	Spicer AL & AR	Push	3.750"	2.125"	2.885"
105C-132 ²	F105C118	Spicer & Others	Push	8.375"	7.000"	4.885"
105C-137	F105C138	Spicer 13" and	Pull	8.000"	6.500"	4.895"
	C105C138	14" 2P				
85-509-3 ³	F105C118	Spicer & Others	Push	8.375"	7.000"	4.885"

¹Machined washer surface on yoke front

²Machined washer surface on yoke rear (for clearance)

³Same as ¹ above except contains spring holes in lugs

■ Use 7743X Clutch Release Bearing and (2) 2306-12 Springs.

★ CLUTCH RELEASE YOKE ATTACHING PARTS—

Use one KEY 10-30, two SCREWS 330231 and two LOCK WASHERS 500356-12

NOTE: When changing from a two plate to single plate clutch or vice versa, a different bearing cap will be required.



MODEL ES42-5

CLUTCH RELEASE CODE TABLE

T210-ES42-5

Rel. Code See b Bill	CR-7 Yoke *	Shaft		Adjustable Arm	D Dim. (In.)	Rel. Code See Tab Bill	CR-7 Yoke *	Shaft		Adjustable Arm	D Dim. (In.)
		CR-1 Short	CR-2 Long					CR-1 Short	CR-2 Long		
1	105C-64	106C-1142	106C-1047	310233X	11.969	60	105C-137	106C-1185	106C-617	310233X	12.969
2	105C-64	106C-1185	106C-438	—	16.500	61	105C-137	106C-1185	106C-839	310233X	13.969
3	105C-64	106C-1185	106C-939	310233X	12.500	62	105C-137	106C-1185	106C-939	310233X	12.500
4	105C-64	106C-1185	106C-1046	310233X	11.468	63	105C-137	106C-1185	106C-939	310473X	12.500
5	105C-64	106C-1185	106C-1047	310233X	11.969	64	105C-137	106C-1185	106C-953	310473X	12.250
6	105C-64	106C-1185	106C-1047	47-526-1-1X	11.969	65	105C-137	106C-1185	106C-1046	310233X	11.468
7	105C-64	106C-1544	106C-839	310233X	13.969	66	105C-137	106C-1185	106C-1046	310473X	11.468
8	105C-68	106C-1142	106C-438	—	16.125	67	105C-137	106C-1185	106C-1047	310233X	11.969
9	105C-68	106C-1142	106C-617	—	12.594	68	105C-137	106C-1185	106C-1083	310233X	10.469
10	105C-68	106C-1142	106C-617	310233X	12.594	69	105C-137	106C-1185	106C-1094	—	10.969
11	105C-68	106C-1142	106C-839	310233X	13.594	70	105C-137	106C-1185	106C-1094	310233X	10.969
12	105C-68	106C-1142	106C-939	310233X	12.125	71	105C-137	106C-1185	106C-1123	—	15.468
13	105C-68	106C-1142	106C-1046	310233X	11.093	72	105C-137	106C-1185	106C-1123	310233X	15.468
14	105C-68	106C-1142	106C-1047	310233X	11.594	73	105C-137	106C-1185	106C-1367	—	12.812
15	105C-68	106C-1278	106C-438	—	16.125	74	105C-137	106C-1185	106C-1367	310233X	12.812
15A	105C-68	106C-1278	106C-939	310473X	12.125	75	105C-137	106C-1185	106C-1375	310873X	9.281
15B	105C-68	106C-1278	106C-939	310233X	12.125	76	105C-137	106C-1185	106C-1515	—	13.875
16	105C-117	106C-1071	106C-939	310233X	12.750	77	105C-137	106C-1185	106C-1529	—	10.812
17	105C-117	106C-1071	106C-1094	310233X	11.219	78	105C-137	106C-1185	330610-5	—	11.969
18	105C-117	106C-1142	106C-939	310233X	12.750	78A	105C-137	106C-1185	46-510-9	—	9.625
19	105C-117	106C-1185	106C-438	—	16.750	79	105C-137	106C-1216	106C-617	310233X	12.969
20	105C-117	106C-1185	106C-617	310233X	13.219	80	105C-137	106C-1278	106C-438	—	16.500
21	105C-117	106C-1185	106C-839	47-526-1-1X	14.219	81	105C-137	106C-1278	106C-588	—	9.500
22	105C-117	106C-1185	106C-939	310233X	12.750	82	105C-137	106C-1278	106C-588	310233X	9.500
23	105C-117	106C-1185	106C-953	310873X	12.500	83	105C-137	106C-1278	106C-617	310233X	12.969
24	105C-117	106C-1185	106C-960	310233X	11.469	84	105C-137	106C-1278	106C-939	310233X	12.500
25	105C-117	106C-1185	106C-1046	310233X	11.718	84A	105C-137	106C-1278	106C-939	310473X	12.500
26	105C-117	106C-1185	106C-1047	310233X	12.219	85	105C-137	106C-1278	106C-939	310873X	12.500
27	105C-117	106C-1185	106C-1083	—	10.719	86	105C-137	106C-1278	106C-960	310233X	11.219
28	105C-117	106C-1185	106C-1083	310233X	10.719	87	105C-137	106C-1278	106C-1046	—	11.468
29	105C-117	106C-1185	106C-1083	310473X	10.719	88	105C-137	106C-1278	106C-1046	310233X	11.468
30	105C-117	106C-1185	106C-1094	310233X	11.219	89	105C-137	106C-1278	106C-1047	—	11.969
31	105C-117	106C-1185	106C-1094	310873X	11.219	90	105C-137	106C-1278	106C-1047	310233X	11.969
32	105C-117	106C-1185	106C-1169	310233X	11.875	91	105C-137	106C-1278	106C-1083	310233X	10.469
33	105C-117	106C-1185	106C-1315	—	10.375	91A	105C-137	106C-1278	106C-1083	310473X	10.469
34	105C-117	106C-1185	106C-1315	310233X	10.375	92	105C-137	106C-1278	106C-1094	310233X	10.969
35	105C-117	106C-1185	106C-1315	47-526-1-1X	10.375	92A	105C-137	106C-1278	106C-1315	310233X	10.125
35A	105C-117	106C-1185	106C-1375	310873X	9.531	93	105C-137	106C-1278	106C-1375	310233X	9.281
36	105C-117	106C-1185	106C-1417	310233X	10.000	94	105C-137	106C-1278	106C-1422	310233X	10.000
37	105C-117	106C-1185	106C-1417	310873X	10.000	95	105C-137	106C-1278	106C-1529	—	10.812
38	105C-117	106C-1185	106C-1490	310233X	18.750	96	105C-137	106C-1360	106C-1083	—	10.469
39	105C-117	106C-1278	106C-939	310233X	12.750	96A	105C-137	106C-1360	106C-1417	310233X	9.750
40	105C-117	106C-1278	106C-960	310873X	11.469	97	105C-137	106C-1360	106C-1422	310233X	10.000
41	105C-117	106C-1278	106C-1047	310233X	12.219	98	105C-137	106C-1375	106C-438	310233X	16.500
42	105C-117	106C-1278	106C-1094	310233X	11.219	99	105C-137	106C-1498	106C-438	—	16.500
43	105C-117	106C-1278	106C-1315	310233X	10.375	100	105C-137	106C-1498	106C-617	310233X	12.969
44	105C-117	106C-1278	106C-1367	310233X	13.062	101	105C-137	106C-1498	106C-617	310473X	12.969
45	105C-117	106C-1360	106C-1083	310233X	10.719	102	105C-137	106C-1498	106C-939	310233X	12.500
46	105C-117	106C-1360	106C-1315	310233X	10.375	103	105C-137	106C-1498	106C-939	310473X	12.500
46A	105C-117	106C-1360	330610-10	—	12.250	104	105C-137	106C-1498	106C-953	310233X	12.250
47	105C-117	Thru Shaft	106C-1550	—	—	105	105C-137	106C-1498	106C-959	310233X	14.468
48	105C-117	Thru Shaft	106C-1558	—	—	106	105C-137	106C-1498	106C-1046	310233X	11.468
49	105C-124	106C-1185	106C-438	—	14.313	107	105C-137	106C-1498	106C-1047	—	11.969
50	105C-124	Thru Shaft	106C-1566	310233X	—	108	105C-137	106C-1498	106C-1047	310233X	11.969
51	105C-124	Thru Shaft	106C-1566	310473X	—	109	105C-137	106C-1498	106C-1083	310233X	10.469
52	105C-124	Thru Shaft	106C-1566	310873X	—	110	105C-137	106C-1498	106C-1094	—	10.969
52A	105C-124	Thru Shaft	49-510-1	310233X	—	111	105C-137	106C-1498	330610-11	310233X	13.250
53	105C-132	106C-1185	106C-1047	310233X	9.782	112	105C-137	330601-1	106C-939	310233X	12.500
54	105C-132	106C-1185	106C-1083	310233X	8.282	112A	85-509-3	106C-1278	106C-939	310233X	12.750
55	105C-132	106C-1185	106C-1417	310873X	7.563	113	85-509-3	106C-1360	106C-1417	310233X	10.000
56	105C-132	106C-1185	46-510-9	—	7.438	114	85-509-3	Thru Shaft	106C-1578	310233X	—
57	105C-132	106C-1278	46-510-9	—	7.438	114A	85-509-3	Thru Shaft	106C-1578	310473X	—
58	105C-137	106C-1141	106C-1169	310233X	11.625	115	85-509-3	Thru Shaft	106C-1578	310873X	—
59	105C-137	106C-1185	106C-438	—	16.500	116	312916	Thru Shaft	97-510-2	—	—

■ Use 7743X Clutch Release Bearing and (2) 2306-12 Springs.

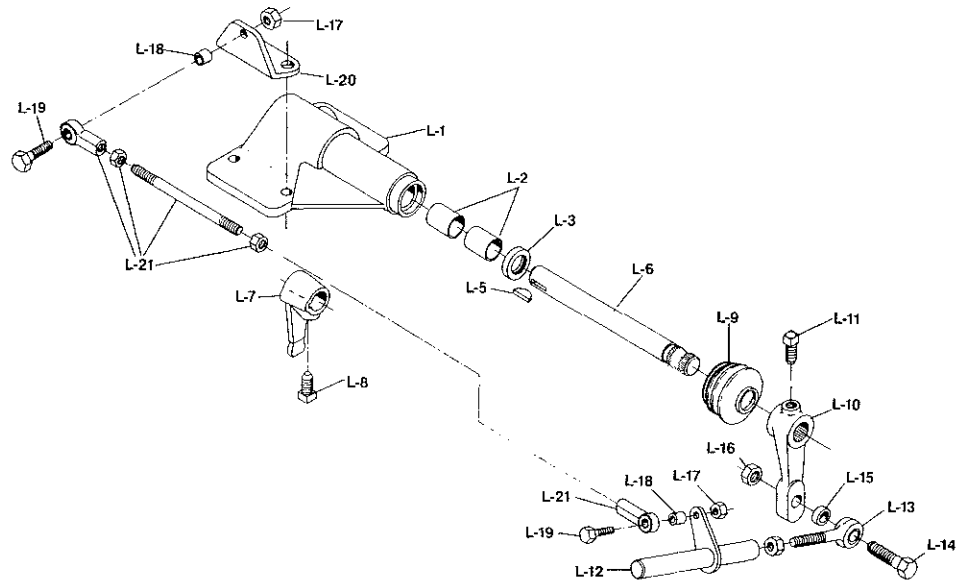
MODEL ES42-5

SPICER®



T210-ES42-5

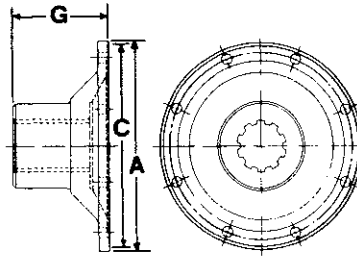
REMOTE CONTROL ASSEMBLY



Ref. No.	Part Number	Part Description	40-18-1-2X	40-18-1-3X	40-18-1-6X
	See Tab Bills	Remote control assembly	1	1	1
	40-18-1-1X	Remote control cover assembly	1	1	1
L-1	N.S.S.	Remote control cover	2	2	2
L-2	40-24-1	Bushing—remote control cover	1	1	1
L-3	28P-19	Seal—remote control rod	1	1	1
L-4	40-65-1-1X	Inner shifter shaft, finger and key	1	1	1
L-5	500007-19	Key—shifter bracket	1	1	1
L-6	40-65-1	Shaft—remote control	1	1	1
L-7	40-6-1	Finger—shifter	1	1	1
L-8	545004-1	Set screw— $\frac{7}{16}$ "-20 x.72" square head . . .	1	1	1
L-9	97-483-3	Boot—shifter rod	1	1	1
N.S.	LW-3-9	Lockwire	1	1	1
L-10	40-6-3	Control lever	1	—	1
or	40-6-5	Control lever	—	1	—
L-11	500550-7	Set screw— $\frac{7}{16}$ "-14 x $\frac{7}{8}$ " square head	1	1	1
L-12	40-65-3-1X	Shift rod	1	1	—
L-13	330938	Rod end	1	1	—
L-14	545001-2	Bolt—control lever ($\frac{1}{2}$ "-13 x $2\frac{1}{4}$ " hex head) . .	1	1	—
L-15	40-38-2	Spacer—control lever bolt	1	1	—
L-16	500370-5	Nut—control lever and rod end ($\frac{1}{2}$ "-13 hex) . .	1	1	—
L-17	500370-3	Nut—tie rod assy. mounting bolt ($\frac{3}{8}$ "-16 hex) .	2	2	—
L-18	40-38-3	Spacer—tie rod assembly mounting bolt	2	2	—
L-19	545002-7	Bolt—tie rod assy. ($\frac{3}{8}$ "-16 x $1\frac{1}{2}$ " hex head) . .	2	2	—
L-20	40-354-3	Bracket—tie rod	1	1	—
L-21	40-65-2-1X	Tie rod assembly	1	1	—

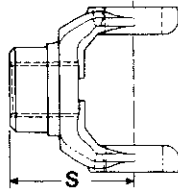
N.S.S.—Not Sold Separately

PARTS LISTED IN THIS CATALOG MAY NO LONGER BE AVAILABLE, USE WITH TRANSMISSION SUPERSEDING LIST.

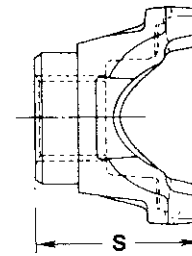


COMPANION FLANGE

Companion Flanges						
Joint Series	A Flange Diameter	Part No. Companion Flange Assembly	Part No. Companion Flange	G End of Hub to Flange Face Length	C Pilot Diameter F-Female M-Male	Brake Size
1480/1550	Rectangular	—	53-106-2	27/8"	F-33/4"	9 x 3 or 12 x 4



FULL ROUND



U-BOLT—BRG. STRAP—HALF ROUND

Series	Yoke Style	End Yoke Part Number	S End of Hub To Center Line Length	Momentary Joint Angle	Brake Size
1480	U-Bolt	3-4-8781	4 1/64"	22 1/2°	—
1480	Brg. Strap**	3-4-8931-2	3 29/32"	23 1/2°	—
1550	U-Bolt	4-4-4491	4 1/64"	21 1/2°	—
1550	Brg. Strap*	4-4-4491-1	4 1/64"	21 1/2°	—
1550	Brg. Strap**	4-4-4491-2	4 1/64"	21 1/2°	—
1550	U-Bolt	4-4-4601	6 27/64"	22°	12 x 4
1550	U-Bolt	4-4-4611	4 11/64"	22 1/2°	—
1550	Brg. Strap*	4-4-4611-1	4 11/64"	22 1/2°	—
1550	Brg. Strap**	4-4-4611-2	4 11/64"	22 1/2°	—
1550	Half Rnd.	(A) 4-4-6111-1X	7 1/32"	22°	12 x 4
1610	Full Rnd.	5-4-6321	4"	19°	—
1610	Half Rnd.	5-4-6321-1	4"	19°	—
1610	Full Rnd.	5-4-6481	4 11/64"	22 1/2°	—
1610	Half Rnd.	5-4-6481-1	4 11/64"	22 1/2°	—
1610	Full Rnd.	5-4-6491	6 21/32"	22°	12 x 4
1610	Half Rnd.	(A) 5-4-7611-1X	7 9/16"	22°	12 x 4
1710	Full Rnd.	6-4-7301	5 1/4"	33 1/2°	—
1710	Half Rnd.	6-4-7301-1	5 1/4"	33 1/2°	—

(A) Assembly Includes Brake Drum
*With Tapped Holes
**With Thru Holes

MODEL ES42-5

SPICER®



OVERHAUL KITS

T210-ES42-5

Part Number	Part Description	Qty.
MAJOR OVERHAUL KIT		
313400-77X	MAJOR OVERHAUL KIT	1
501200	Nut—mainshaft output	1
313401-27X	Thrust washer kit	1
313429-7X	Shifter housing small parts kit	1
313432-34X	Minor overhaul kit	1
MINOR OVERHAUL KIT (Included in Major Overhaul Kit)		
313432-34X	MINOR OVERHAUL KIT	1
BEARINGS		
550986	Mainshaft pocket	1
550989	Mainshaft rear cone	1
550988	Drive gear front	1
550963	Mainshaft 1st and reverse	2
550886	Reverse idler gear	2
550964	Countershaft front—cone	1
550965	Countershaft front—cup	1
550966	Countershaft rear—cone	1
550967	Countershaft rear—cup	1
550968	Mainshaft 2nd needle	1
313661X	Kit—bearing needle 3rd speed	1
313662X	Kit—bearing needle 4th speed & spacer	1
40-486-1	Clip—shift fork (2nd & 3rd):(4th & 5th)	4
49-486-3	Clip—shift fork (1st & reverse)	2
49-468-2	Ring—oil	1
40-463-4-1X	Seal—drive gear (flat type)	1
40-463-6-1X	Seal—drive gear (stem type)	1
63-463-1	Seal—mainshaft rear	1
545077	#2 moly grease (packet)	1
545080-1	Locite—threadlock adhesive (vail)	1
312475-40X	Gasket kit	1
313438-1X	Shim kit—countershaft rear	1
313024-14X	Snap ring—kit	1
2363	Service manual	1
2770	Bulletin—bearing lube instruction	1
2783	Bulletin—locite apl. for mainshaft nut	1
(Included in Major Overhaul Kit)		
313401-27X	THRUST WASHER KIT	1
974-W	Reverse idler	2
40-47-3	Mainshaft—3rd & 4th speed	1
49-47-3	Mainshaft—reverse	1
545087	Pin—lock	2
40-47-2	Washer—1st & 2nd speed	1
313429-7X	SHIFTER HOUSING SMALL PARTS	1
40-80-1	Poppet ball (BSSN J880705001)	3
101-438-4	Poppet plunger (ASSN J880705001)	3
40-487-1	Insert—poppet spring and ball	3
40-438-1	Pin—1st & reverse select plunger	1
97-72-23	Spring—shift bar poppet	3
62-72-8	Spring—1st & reverse shift finger plunger	1
2823	Bulletin—shift bar assemblies and poppet plunger	1

BSSN—Before Starting Serial Number
 ASSN—After Starting Serial Number

PARTS LISTED IN THIS CATALOG MAY NO LONGER BE AVAILABLE, USE WITH TRANSMISSION SUPERSEDING LIST.

MODEL ES42-5

OVERHAUL KITS

T210-ES42-5

Part Number	Part Description	Qty.
	(Included in MAJOR and MINOR OVERHAUL KIT)	
312475-40X	GASKET KIT	1
40-223-1	Mainshaft rear bearing cap	1
40-223-3	Mainshaft rear bearing cap (D.C.M. brake)	1
97-324-1-1X	PTO aperture cover	2
49-324-1-1X	Reverse idler cover	1
40-155-1	Tower	1
545056-9	Anaerobic sealant	1
2792	Bulletin—liquid gasket	1
313024-14X	SNAP RING KIT	1
40-381-2	Mainshaft 3rd & 4th thrust washer	1
40-381-3	Countershaft head end gear	1
40-381-3	Mainshaft 2nd & 3rd clutch gear	1
40-381-4	Mainshaft 1st & 2nd thrust washer	1
40-381-5	Countershaft 4th gear	1
46-381-1	Mainshaft front bearing	1
40-381-1	4th & 5th clutch gear	1
40-381-6	Drive gear pocket bearing	1
2811	Bulletin—2nd speed bearing overhaul	1
2807	Bulletin—drive gear replacement	1
313438-1X	SHIM KIT	1
40-228-1-3	Countershaft rear bearing (.0165/.0135)	1
40-228-1-2	Countershaft rear bearing (.1110/.0090)	1
40-228-1-1	Countershaft rear bearing (.005/.0045)	1
2793	Bulletin—countershaft shim kit	1
40-463-4-1X	SUB-ASSEMBLY—OIL SEAL & INST. SL (FLAT CAP)	1
2819	Bulletin—oil seal inst. instruction	1
40-463-4	Seal—drive gear bearing cap	1
40-420-1	Sleeve—oil seal inst. (1.75 dia. shaft)	1
40-463-6-1X	SUB-ASSEMBLY—OIL SEAL & INST. SL (STEM CAP)	1
2819	Bulletin—oil seal inst. instruction	1
40-463-6	Seal—drive gearing bearing cap	1
40-420-2	Sleeve—oil seal inst. (1.500 dia.)	1
40-420-3	Sleeve—oil seal inst. (1.375 dia.)	1
97-324-1-1X	KIT—GASKET 6 BOLT PTO	1
97-324-1	Gasket—PTO aperture cover	1
330950	Tag—instruction (service gaskets)	1
49-324-1-1X	KIT—GASKET—REVERSE IDLER COVER	1
49-324-1	Gasket—reverse idler cover	1
330950	Tag—instruction (service gaskets)	1
313661X	KIT—BEARING NEEDLE 3RD SPEED	1
550987	Bearing—needle roller	2
313662X	KIT—BEARING NEEDLE 4TH SPEED & SPACER	1
551001	Bearing—mainshaft 4th needle	2
40-37-2	Spacer—mainshaft 4th needle bearing	1

MODEL ES42-5

SPICER®



T210-ES42-5

TABULATED BILLS OF MATERIAL

Tab No.	Used By	For Use With Clutch 13" and 14" Single or 2PL	CLUTCH HOUSING			Main Drive Gear A-11	Drive Gear Bearing Cap F-1	Case Assembly G-1
			S A E	Assembly No.	Rel. Code Page17			
Model ES42-5A								
801438								
-1	Never released for production							
-2	Never released for production							
-3	Never released for production							
-4	Never released for production							
-5	Fabrication	Push Type	2	49-518-4-2X	52	40-35-18-1X	40-19-24-1X	40-15-6-1X
-6	Spicer Australia	Pull Type	2	49-518-5-2X	—	40-35-21-1X	40-19-40-1X	40-15-6-1X
-7	Tree Farmer	Push Type	3	{ 46-518-21-1X } { 49-360-3-1X }	—	40-35-18-1X	40-19-29-1X	40-15-6-1X
-8	Corbas France	Push Type	2	49-518-6-1X	—	40-35-19-1X	40-19-32-1X	40-15-6-1X
-9	Navistar	Push Type	2	49-518-5-2X	—	40-35-18-1X	40-19-35-1X	40-15-9-1X
-10	Ardco Ind.	Push Type	2	49-518-4-2X	—	40-35-18-1X	40-19-24-1X	40-15-6-1X
-11	Never released for production							
-12	Ford	Push Type	2	49-518-4-2X	—	40-35-18-1X	40-19-1-1X	40-15-6-1X
-13	Ford	Push Type	—	49-360-3-1X	—	40-35-17-1X	40-19-3-1X	40-15-6-1X
-14	Ford	Pull Type	2	49-518-4-2X	—	40-35-21-1X	40-19-40-1X	40-15-6-1X
-15	General	Pull Type	2	49-518-4-2X	—	40-35-21-1X	40-19-40-1X	40-15-6-1X
-16	Litton Resource	Push Type	2	49-518-5-2X	50	40-35-18-1X	40-19-24-1X	40-15-6-1X
-17	Spicer U.K.	Push Type	—	49-360-3-1X	—	40-35-17-1X	40-19-3-1X	40-15-6-1X
-18	Corbas France	Push Type	2	49-518-6-1X	—	40-35-19-1X	40-19-32-1X	40-15-6-1X
-19	Corbas France	Push Type	2	49-518-6-1X	—	40-35-19-1X	40-19-32-1X	40-15-6-1X
-20	Navistar	Push Type	2	49-518-5-2X	—	40-35-18-1X	40-19-35-1X	40-15-9-1X
-21	Ford	Push Type	—	49-360-3-1X	—	40-35-17-1X	40-19-3-1X	40-15-6-1X
-22	Ford	Push Type	—	49-360-3-1X	—	40-35-17-1X	40-19-3-1X	40-15-6-1X
-23	Ford	Push Type	—	49-360-3-1X	—	40-35-17-1X	40-19-3-1X	40-15-6-1X
-24	Ford	Push Type	2	49-518-4-2X	—	40-35-18-1X	40-19-1-1X	40-15-6-1X
-25	Ford	Push Type	2	49-518-4-2X	—	40-35-18-1X	40-19-1-1X	40-15-6-1X
-26	GMC	Push Type	—	49-360-4-1X	—	40-35-20-1X	40-19-6-1X	40-15-8-1X
-27	Navistar	Push Type	2	49-518-5-2X	—	40-35-18-1X	40-19-35-1X	40-15-9-1X
-28	Cummins	Push Type	3	{ 46-518-21-1X } { 49-360-3-1X }	35	40-35-18-1X	40-19-30-1X	40-15-6-1X
-29	Ford	Pull Type	2	49-518-4-2X	—	40-35-21-1X	40-19-40-1X	40-15-6-1X
-30	Ford	Pull Type	2	49-518-4-2X	—	40-35-21-1X	40-19-40-1X	40-15-6-1X
-31	Cummins	Push Type	3	46-518-21-1X 49-360-3-1X	50	40-35-18-1X	40-19-31-1X	40-15-6-1X
-32	Cummins	Push Type	2	49-518-4-2X	50	40-35-18-1X	40-19-1-1X	40-15-6-1X
-33	Navistar	Push Type	2	49-518-5-2X	—	40-35-18-1X	40-19-35-1X	40-15-9-1X
-34	McElory Mach.	Pull Type	2	49-518-5-2X	12	40-35-21-1X	40-19-40-1X	40-15-6-1X
-35	Navistar	Push Type	2	49-518-5-2X	—	40-35-18-1X	40-19-35-1X	40-15-9-1X
-36	Bombardier	Push Type	3	{ 46-518-21-1X } { 49-360-3-1X }	50	40-35-18-1X	40-19-31-1X	40-15-9-1X
-37	Navistar	Push Type	2	49-518-5-2X	—	40-35-18-1X	40-19-35-1X	40-15-9-1X
-38	Cummins	Push Type	3	{ 46-518-21-1X } { 49-360-3-1X }	50	40-35-18-1X	40-19-31-1X	40-15-6-1X



MODEL ES42-5

TABULATED BILLS OF MATERIAL

T210-ES42-5

Tab No.	Rear Bearing Cap H-1	SPEEDOMETER		End Yoke Page 19	SHIFTER	
		Drive Gear B-24	Driven Gear H-8		Lever & Dome Assembly Page 15	Remote Control Page 18

Model ES42-5A (Cont'd)
301438

-1	Never released for production					
-2	Never released for production					
-3	Never released for production					
-4	Never released for production					
-5	40-19-38-2X	53-452-3	62-453-4	4-4-4491	—	40-18-1-2X
-6	40-19-38-2X	53-452-4	53-453-2	4-4-4491-1	—	40-18-1-2X
-7	40-19-38-2X	—	—	3-4-8781	—	—
-8	40-19-38-2X	53-452-4	53-453-2	4-4-5221	40-17-3-5X	—
-9	40-19-22-2X	53-452-3	—	—	—	—
-10	40-19-38-2X	—	—	—	40-17-1-12X	—
-11	Never released for production					
-12	40-19-39-1X	—	—	—	—	—
-13	40-19-39-1X	—	—	—	—	—
-14	40-19-39-1X	—	—	—	—	—
-15	40-19-39-1X	—	—	4-4-4611	40-17-1-12X	—
-16	40-19-38-2X	53-452-4	53-453-2	—	40-17-1-12X	—
-17	40-19-39-1X	53-452-4	53-453-2	53-106-2	—	40-18-1-2X
-18	40-19-38-2X	53-452-4	53-453-2	4-4-5221	—	40-18-1-2X
-19	40-19-19-2X	53-452-4	53-453-2	—	—	40-18-1-2X
-20	40-19-38-2X	53-452-3	—	—	—	—
-21	40-19-39-1X	53-452-6	—	4-4-4611-2	—	—
-22	40-19-39-1X	53-452-6	—	3-4-8931-2	—	—
-23	40-19-39-1X	53-452-6	—	5-4-6481-1	—	—
-24	40-19-39-1X	53-452-6	—	4-4-4611-2	—	—
-25	40-19-39-1X	53-452-6	—	5-4-6481-1	—	—
-26	40-19-22-2X	53-452-3	—	—	—	—
-27	40-19-19-2X	53-452-3	—	—	—	—
-28	40-19-38-2X	53-452-4	53-453-2	3-4-8781	40-17-1-12X	—
-29	40-19-39-1X	53-452-6	—	5-4-6481-1	—	—
-30	40-19-39-1X	53-452-6	—	4-4-4611-2	—	—
-31	40-19-38-2X	53-452-4	53-453-2	53-106-2	—	40-18-1-2X
-32	40-19-38-2X	53-452-4	53-453-2	53-106-2	—	40-18-1-2X
-33	40-19-42-2X	53-452-5	—	—	—	—
-34	40-19-38-2X	—	—	53-106-2	—	40-18-1-2X
-35	40-19-43-2X	53-452-5	—	—	—	—
-36	40-19-22-2X	—	—	4-1-6051X	40-17-1-2X	—
-37	40-19-42-2X	53-452-5	—	—	—	—
-38	40-19-38-2X	53-452-4	53-453-2	—	—	40-18-1-2X

MODEL ES42-5

SPICER®



T210-ES42-5

TABULATED BILLS OF MATERIAL

Tab No.	Used By	For Use With Clutch 13" and 14" Single or 2PL	CLUTCH HOUSING			Main Drive Gear A-1	Drive Gear Bearing Cap F-1	Case Assembly G-1
			S A E	Assembly No.	Rel. Code Page 16			
Model ES42-5D								
301439								
-1	Navistar	Push Type	2	49-518-5-2X	—	40-35-18-1X	40-19-35-1X	40-15-9-1X
-2	Ford	Push Type	2	49-518-4-2X	—	40-35-18-1X	40-19-1-1X	40-15-6-1X
-3	Ford	Push Type	—	49-360-3-1X	—	40-35-17-1X	40-19-3-1X	40-15-6-1X
-4	Navistar	Push Type	2	49-518-5-2X	—	40-35-18-1X	40-19-35-1X	40-15-9-1X
-5	Never released for production							
-6	Never released for production							
-7	Never released for production							
-8	Never released for production							
-9	Corbas France	Push Type	2	49-518-6-1X	—	40-35-19-1X	40-19-32-1X	40-15-6-1X
-10	GMC	Push Type	—	49-360-4-1X	—	40-35-20-1X	40-19-6-1X	40-15-8-1X
-11	Ford	Push Type	2	49-518-4-2X	—	40-35-18-1X	40-19-1-1X	40-15-6-1X
-12	Ford	Push Type	—	49-360-3-1X	—	40-35-17-1X	40-19-3-1X	40-15-6-1X
-13	Ford	Pull Type	2	49-518-4-2X	—	40-35-21-1X	40-19-40-1X	40-15-6-1X
-14	Navistar	Push Type	2	49-518-5-2X	—	40-35-18-1X	40-19-35-1X	40-15-9-1X
-15	Corbas France	Push Type	2	49-518-6-1X	—	40-35-19-1X	40-19-32-1X	40-15-6-1X
-16	GMC	Push Type	2	49-518-7-2X	—	40-35-19-1X	40-19-5-1X	40-15-8-1X
-17	Dina	Push Type	2	49-518-5-2X	50	40-35-18-1X	40-19-24-1X	40-15-6-1X
-18	Ford	Push Type	—	49-360-3-1X	—	40-35-17-1X	40-19-3-1X	40-15-6-1X
-19	Ford	Push Type	—	49-360-3-1X	—	40-35-17-1X	40-19-3-1X	40-15-6-1X
-20	Ford	Push Type	—	49-360-3-1X	—	40-35-17-1X	40-19-3-1X	40-15-6-1X
-21	Ford	Push Type	2	49-518-4-2X	—	40-35-18-1X	40-19-1-1X	40-15-6-1X
-22	Ford	Push Type	2	49-518-4-2X	—	40-35-18-1X	40-19-1-1X	40-15-6-1X
-23	Navistar	Pull Type	2	49-518-5-2X	—	40-35-22-1X	40-19-40-1X	40-15-9-1X
-24	Famsa	Pull Type	2	49-518-5-2X	3	40-35-22-1X	40-19-40-1X	40-15-9-1X
-25	GMC	Push Type	2	49-518-7-2X	—	40-35-19-1X	40-19-5-1X	40-15-8-1X
-26	Navistar	Pull Type	2	49-518-5-2X	—	40-35-22-1X	40-19-40-1X	40-15-9-1X
-27	Spicer Australia	Pull Type	2	49-518-5-2X	—	40-35-21-1X	40-19-40-1X	40-15-6-1X
-28	Navistar	Pull Type	2	49-518-5-2X	—	40-35-22-1X	40-19-40-1X	40-15-9-1X
-29	Ford	Pull Type	2	49-518-4-2X	—	40-35-21-1X	40-19-40-1X	40-15-6-1X
-30	Ford	Pull Type	2	49-518-4-2X	—	40-35-21-1X	40-19-40-1X	40-15-6-1X
-31	Hino Motors	Push Type	2	49-518-4-2X	50	40-35-18-1X	40-19-24-1X	40-15-9-1X
-32	Tucker	Push Type	2	49-518-5-2X	50	40-35-18-1X	40-19-35-1X	40-15-9-1X
-33	TSP	Push Type	2	49-518-5-2X	—	40-35-18-1X	40-19-35-1X	40-15-9-1X
-34	TSP	Pull Type	2	49-518-5-2X	62	40-35-22-1X	40-19-40-1X	40-15-9-1X
-35	Navistar	Pull Type	2	49-518-5-2X	—	40-35-22-1X	40-19-40-1X	40-15-9-1X
-36	Navistar	Push Type	2	49-518-5-2X	—	40-35-18-1X	40-19-35-1X	40-15-9-1X
-37	Navistar	Push Type	2	49-518-5-2X	—	40-35-18-1X	40-19-35-1X	40-15-9-1X
-38	Navistar	Pull Type	2	49-518-5-2X	—	40-35-22-1X	40-19-40-1X	40-15-9-1X
-39	GMC	Push Type	—	—	—	40-35-20-1X	40-19-6-1X	40-15-8-1X
-40	Spicer Australia	Pull Type	2	49-518-5-2X	—	40-35-22-1X	40-19-40-1X	40-15-6-1X
-41	TSP	Push Type	2	49-518-5-2X	—	40-35-18-1X	40-19-35-1X	40-15-9-1X
-42	Navistar	Push Type	2	49-518-5-2X	—	40-35-17-1X	40-19-35-1X	40-15-9-1X



MODEL ES42-5

TABULATED BILLS OF MATERIAL

T210-ES42-5

Tab No.	Rear Bearing Cap H-1	SPEEDOMETER		End Yoke Page 19	SHIFTER	
		Drive Gear B-24	Driven Gear H-8		Lever & Dome Assembly Page 15	Remote Control Page 18
Model ES42-5D (Cont'd)						
301439						
-1	40-19-22-2X	53-452-3	—	—	—	—
-2	40-19-39-1X	—	—	—	—	—
-3	40-19-39-1X	—	—	—	—	—
-4	40-19-38-2X	53-452-3	—	—	—	—
-5	Never released for production					
-6	Never released for production					
-7	Never released for production					
-8	Never released for production					
-9	40-19-38-2X	53-452-4	53-453-2	4-4-5221	40-17-3-5X	—
-10	40-19-22-2X	53-452-3	—	—	—	—
-11	40-19-39-1X	—	—	—	—	—
-12	40-19-39-1X	—	—	—	—	—
-13	40-19-39-1X	—	—	—	—	—
-14	40-19-19-2X	53-452-3	—	—	—	—
-15	40-19-19-2X	53-452-4	53-453-2	—	40-17-3-5X	—
-16	40-19-19-2X	53-452-3	—	—	—	—
-17	40-19-38-2X	53-452-4	53-453-2	53-106-2	40-17-1-12X	—
-18	40-19-39-1X	53-452-6	—	4-4-4611-2	—	—
-19	40-19-39-1X	53-452-6	—	3-4-8931-2	—	—
-20	40-19-39-1X	53-452-6	—	5-4-6481-1	—	—
-21	40-19-39-1X	53-452-6	—	4-4-4611-2	—	—
-22	40-19-39-1X	53-452-6	—	5-4-6481-1	—	—
-23	40-19-22-2X	53-452-3	—	—	—	—
-24	40-19-38-2X	53-452-3	62-453-4	53-106-2	40-17-1-12X	—
-25	40-19-22-2X	53-452-3	—	—	—	—
-26	40-19-38-2X	53-452-3	—	—	—	—
-27	40-19-38-2X	53-452-4	53-453-2	4-4-4491-1	—	40-18-1-6X
-28	40-19-19-2X	53-452-3	—	—	—	—
-29	40-19-39-1X	53-452-6	—	5-4-6481-1	—	—
-30	40-19-39-1X	53-452-6	—	4-4-4611-2	—	—
-31	40-19-38-2X	53-452-4	53-453-2	53-106-2	—	40-18-1-2X
-32	40-19-22-2X	—	—	—	40-17-1-12X	—
-33	40-19-22-2X	53-452-4	53-453-2	—	—	—
-34	40-19-38-2X	53-452-4	53-453-2	—	40-17-1-12X	—
-35	40-19-42-2X	53-452-5	—	—	—	—
-36	40-19-43-2X	53-452-5	—	—	—	—
-37	40-19-42-2X	53-452-5	—	—	—	—
-38	40-19-43-2X	53-452-5	—	—	—	—
-39	40-19-38-2X	53-452-3	—	—	—	—
-40	40-19-38-2X	53-453-4	53-453-2	4-4-4491-1	—	40-18-1-2X
-41	40-19-43-2X	53-452-5	—	53-106-2	40-17-1-12X	—
-42	40-19-41-2X	53-452-5	—	—	—	—

For parts or service call us
Pro Gear & Transmission, Inc.



1 (877) 776-4600

(407) 872-1901

parts@eprogear.com

906 W. Gore St.

Orlando, FL 32805

